



BULL & BRED FEMALE SALE

Dec. 4, 2024 • Stockmen's West • Dickinson, ND • 12 p.m. MST

selling

60 ANGUS BULLS

100 REGISTERED BRED FEMALES

650 COMMERCIAL BRED HEIFERS



AARON & SHEYNA STROMMEN

CASSIDY, COOPER & CLINT

1550 70th St Box 7 • Solen, ND 58570

(701) 445-2020 • (701) 290-7983

strommen@westriv.com •   


www.StrommenRanch.com



SHANE & AMANDA TALKINGTON

ABBY, HADLEY & CADE

3137 136th Ave. SW • Belfield, ND 58622

(701) 290-7222 • 


talkingtonangusranch@yahoo.com

www.TalkingtonAngusRanch.com



PETE, VAWNITA & KYLE BEST

1930 118th Ave NW • Watford City, ND 58854

(701) 842-4865 • (701) 570-6959 • 

bestangus@yahoo.com

www.BestAngusAndQuarterHorses.com

WELCOME to the Badlands Angus Alliance Bull & Bred Female Sale. This is not only a partnership between Best Angus, Strommen Ranch and Talkington Angus Ranch, it is also a partnership with all of our current and future customers. With our combined resources and marketing assistance from our partners at Stockmen's Livestock Exchange in Dickinson, ND, we are committed to helping our customers add value to their females and continuing the Badlands Angus Alliance sale as THE PREMIER SOURCE for bred females in western North Dakota.

This sale features 650 elite, source and genetic-verified bred females from our respective programs and from our commercial customers. We are proud of the exceptional herds our customers are building and we are excited to help them market their top females through this sale. They are influenced by and bred to Best, Strommen or Talkington seedstock.

These bred females are the type and kind you can use to build a profitable, sustainable herd for generations. They are bred to be easy-fleshing cattle that are productive on minimal inputs, with enough emotional intelligence to be handled with minimal labor, and enough survival instinct to get out and forage, nurture their calves and bring in pounds at weaning.

Many of them are AI-bred to proven, calving-ease sires with a tight calving window, and have been ultrasounded for calving dates. This year's consignments offer a variety of calving start dates, including March, April and May. They are all source and genetic-verified and bred to known calving-ease genetics. A full ranch and production history on each consignment is included in the heifer listings.

The coming-2-year-old ANGUS bulls are thick, stout, rugged, fully guaranteed and will be ready for service in big country. They were retained specifically for this sale. We are excited to offer these bulls as it gives us a chance to see our genetics as they age and develop. These bulls have been slowly developed with soundness and longevity in mind, with an optimum gain, not an excessive gain. Our ultimate goal is to have the bulls range-ready, sound-footed and ready to go to work for you!

Strommens and Bests are offering a select group of registered bred heifers and cows, beginning on page 47.

Talkingtons, Bests, Strommens





BADLANDS ANGUS ALLIANCE

BULL & BRED FEMALE SALE

December 4, 2024 • Stockmen's West • Dickinson, ND • 12 p.m. MST

SALE DAY PHONES

SHANE TALKINGTON CELL.....(701) 290-7222
AARON STROMMEN CELL.....(701) 290-7983
PETE BEST CELL.....(701) 570-6959

SALE STAFF

KYLE SHOE, AUCTIONEER.....(406) 366-0472
KRIS PETERSON, SPECIAL ASSIGNMENT.....(701) 399-0305
SCOTT RESSLER, NORTH DAKOTA STOCKMEN'S ASSOC.....(701) 391-7310
TODD FINKE, SPECIAL ASSIGNMENT.....(701) 240-7711
ANDREW SWANSON, FARM & RANCH GUIDE.....(507) 829-4133
LOGAN HOFFMAN, DVAUCTION.....(701) 388-2618

STOCKMEN'S LIVESTOCK EXCHANGE REPRESENTATIVES

JOHN FISCHER.....(701) 290-1606
AUSTIN HENDERSON.....(701) 471-2673
DAN O'DONNELL.....(406) 939-0526
JAMES ERICKSON.....(701) 290-4861

SALE ORDER • Bulls will sell first, followed by the commercial bred heifers and then the registered bred heifers and registered cows.

VIDEOS • Videos of the bulls and bred females will be available on www.DVAuction.com

TERMS AND CONDITIONS • Bulls sell under the standard terms and conditions of the American Angus Association. Terms of the sale are cash. Full payment is due on sale day. For purchases made through DVAuction, please remit payment directly to Stockmen's West, PO Box 1348, Dickinson, ND 58602. All cattle must be paid for prior to release from Stockmen's Livestock. Any cattle remaining after two days from the sale will be charged \$5 per head per day for feed.

ANNOUNCEMENTS • Announcements made from the block on sale day will supersede the information printed in this book.

BULL DEVELOPMENT • These bulls have been handled correctly and developed without ANY creep. They have been fed just enough to express genetic differences, but not overfed as to compromise soundness or longevity. We want you to have a bull that will do his job and last for years.

SALE TIME • The sale starts at 12 p.m. MST.

EPDS • EPDs are current as of Oct. 25, 2024.

BULL DELIVERY • We will offer free delivery on the bulls within 500 miles of Dickinson, ND. Deliveries will begin immediately following the sale.

FEMALE DELIVERY • We will not deliver the females, but can assist in lining up trucking. Please contact us or Stockmen's West to make arrangements.

HEALTH • All bulls and registered heifers have been on a complete health program as prescribed by our respective veterinarians. Specific health information on the commercial bred heifers is presented in their individual write-ups, beginning on page 30.

FERTILITY • All bulls have passed a fertility exam performed by Dr. Gary Scheiber for the Best Angus bulls, Dr. Pat Bierman for the Strommen bulls and Dr. Chance Noyce for the Talkington bulls.

SIGHT UNSEEN PURCHASES • If you, for some reason, are unable to attend the sale, but wish to place a bid, feel free to call us and we will handle your bid as if you were here. If you wish to be on the phone during the sale, we will try to accommodate your request. Please let us know in advance so arrangements can be made. All sight unseen bull purchases are fully guaranteed, when you talk to the owner prior to the sale.

GUARANTEE • The bulls are fully guaranteed for one breeding season. We understand that these are animals and that injuries do occur, but we have the utmost confidence that we have developed these bulls in the best way to protect your investment. If an injury or death occurs, the ranch of origin will guarantee them for the purchase price minus salvage value (\$2,500).

LIABILITY • Anyone attending this sale does so at their own risk. Neither the owners nor anyone connected to this sale, assumes any liability, legal or otherwise.

WATCH & BID ONLINE • Videos of the bulls and heifers are available at www.dvauction.com. Bid online via DVAuction, too! **DVAuction**



Cattlemen & Friends - We are so grateful to be a part of this Alliance that is turning into the premier commercial female sale in North Dakota. Strommens and Talkingtons are great partners with very similar philosophies to our own. I am extremely proud of the heifers that the consigners brought to Dickinson the last few years. More importantly, the feedback from the buyers has been excellent. I expect nothing less from this year's offering as well. Our goal of helping our customers realize the value they deserve for raising superior Angus females, continues to move forward.

We ranch in the North Dakota badlands southeast of Watford City in some of the most rugged terrain in the region. We are committed to producing cattle that thrive under harsh conditions. Ranching is full of challenges, which is why we believe it is better for us to design cattle that will be profitable working in harmony with nature instead of a constant struggle against mother nature. Cattle designed to be profitable require less labor inputs since they can maintain their body condition and breed back on poor quality stockpiled forage. They can do this since they are deep ribbed, wide made and poses genetic fertility. They have sound udders, feet and legs allowing them to forage and care for their calves without extra assistance from management. Disposition and intelligence are extremely important traits for reducing labor requirements as well. We can't forget the most important profitability trait of them all, fertility. Just to make things a little harder, we need to make sure these cattle will be profitable to all segments of the beef industry. They need to gain, have excellent feed efficiency and strong carcass traits. Talk about a challenge, but this is what makes breeding cattle so much fun!

The bulls are all virgin two-year olds that were retained specifically for this sale.

We are a family operation and I would like to thank all of the family and friends that help us keep Best Angus running. We could not do what we do without our customers support over the years. We hope to see you all in Dickinson, but if you are unable to attend please contact me and I will gladly help you select an Angus bull that will fit your environment.

- Pete, Vawnita & Kyle Best



PETE, VAWNITA & KYLE BEST

1930 118th Ave NW • Watford City, ND 58854

(701) 842-4865 • (701) 570-6959 • 

bestangus@yahoo.com

www.BestAngusAndQuarterHorses.com



Annual Production Sale
March 3, 2025

At the Ranch
Watford City, ND

Offering

75 ANGUS BULLS

30 Fancy Commercial Heifers

20 Elite Registered Heifers

Ranch-Broke Horses



Pete & Vawnita Best

Watford City ND

701-570-6959

bestangus@yahoo.com

*Profitable by design,
Efficient by nature.*





LOT 1 • Best Payweight 342



BEST PAYWEIGHT 342

BD:03/25/23

Reg #: 20859880

#Basin Payweight 006S

#Basin Payweight 1682

21AR O Lass 7017

#Pine Creek Right Time 1147

Rosetta 2101 of Best Angus

#Rosetta 818 of Best Angus

#Vermilion Payweight J847

Basin Lucy 3829

#HARB Pendleton 765 J H

21AR O Lass F24A

#Leachman Right Time

Sitz Everelda Entense 1137

#Sinclair Extra 4X13

Rosetta 678 of Best Angus

BW	WWR	YWR	CE	BW	WW	YW	Milk
95	101	103	-1	3.8	58	103	27

Dam has been one of our top cows. His maternal sisters are some of the best cows in the herd. We have had excellent luck with Basin Payweight 1682.



BEST PAYWEIGHT 1682 • Sire of Lot 1



ROSETTA 2101 AND HER 2019 HEIFER CALF • Dam and Maternal Sister of Lot 1, respectively



LOT 2 • Best LaJoya 345



BEST LAJOYA 345

BD:03/26/23

Reg #: 21045555

O C C Zodiac 655Z
Mc Cumber La Joya 098
 #Lassie 113 of Mc Cumber

CAR Hickory 547
Marie 1004 of Best Angus
 Marie 367 of Best Angus

O C C Umax 820U
 O C C Dixie Erica 628W
 #O C C Missing Link 830M
 #Lassie 935 OF Mc Cumber
 CAR Cedar Ridge 156
 CAR Miss Marie 3157
 #LAR Alliance 64L
 Marie 7010 of Best Angus

BW	WWR	YWR	CE	BW	WW	YW	Milk
56	102	103	16	-3.1	55	93	22

Sleep all night heifer bull. He is out of one of our top cow families. He is heavy made and demonstrated above average performance.



MC CUMBER LA JOYA 099 • Sire of Lots 2-3



BEST LAJOYA 344

BD:03/26/23

Reg #: 21045559

O C C Zodiac 655Z
Mc Cumber La Joya 098
 #Lassie 113 of Mc Cumber

Best Tjelde 4008
Miss Marie 6209 Best Angus
 #Miss Marie 250 of Best Angus

O C C Umax 820U
 O C C Dixie Erica 628W
 #O C C Missing Link 830M
 #Lassie 935 OF Mc Cumber
 Best Tjelde 2016
 Gale 7024 of Best Angus
 #LAR Alliance 64L
 Miss Marie 0013 Best Angus

BW	WWR	YWR	CE	BW	WW	YW	Milk
80	116	103	11	-1.4	58	96	23

Here is a larger framed La Joya that should work on heifers.



MISS MARIE 0013 BEST ANGUS • Great Granddam of Lot 3



LOT 4 • Best Rainfall 309



BEST RAINFALL 309

BD:03/17/23

Reg #: 20859897

#Coleman Charlo 0256
S A V Rainfall 6846
 S A V Blackcap May 4136

Angus Alliance Winchester975
Lassie 8008 of Best Angus
 #Lassie 104 of Circle V

#O C C Paxton 730P
 Bohi Abigale 6014
 #S A V 8180 Traveler 004
 #S A V May 2397
 #N Bar Emulation EXT
 Coleman Donna 386
 S R Alliance 904
 Lassie 6199 of Mc Cumber

BW	WWR	YWR	CE	BW	WW	YW	Milk
94	95	96	3	2.4	51	97	23

Dam is a Winchester daughter our of 104V.



S A V RAINFALL 6846 • SIRE OF LOT 4



LASSIE 104 OF CIRCLE V • MATERNAL GRANDDAM OF LOT 4



21AR PACKER 4313 • Sire of Lots 5-10

We purchased Packer when he was 7 years old. He was a great breeding bull and easy to have around. We wanted to add a little performance and muscle without sacrificing our maternal traits. His dam is the foundation donor at 21 Angus Ranch.



LOT 5 • Best Packer 3135



BEST PACKER 3135

BD:04/07/23

Reg #: 21069103

#Connealy Packer 547
21AR Packer 4313
 21AR Estrada 9032

Mc Cumber Tribute 702
Rosetta 0302 of Best Angus
 Rosetta 8108 of Best Angus

#Feltons Meat Packer 62
 Bestrelle of Conanga 539
 #O C C Great Plains 943G
 #21AR Estrada 7196
 Mc Cumber Tremendous 2008
 #Lassie 113 of Mc Cumber
 Best Fortunate 6050
 Rosetta 3011 of Best Angus

BW	WWR	YWR	CE	BW	WW	YW	Milk
75	103	110	9	0.4	68	118	21

Moderate framed low birth weight Packer son. Dam is moderate framed easy fleshing cow who has a perfect udder and excellent feet.



LOTS 6-7 ARE FULL BROTHERS IN BLOOD OUT OF THIS ROSETTA COW FAMILY



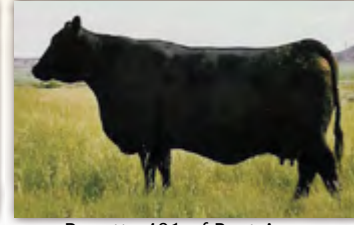
Rosetta 144 of Best Angus



Rosetta 8004 of Best Angus



Rosetta 1100 of Best Angus



Rosetta 401 of Best Angus



LOT 6 - Best Packer 3109



BEST PACKER 3109

BD:03/31/23

Reg #: 21069101

#Connealy Packer 547

21AR Packer 4313

21AR Estrada 9032

Mc Cumber Tribute 702

Rosetta 9040 of Best Angus

#Rosetta 144 of Best Angus

#Feltons Meat Packer 62

Bestrelle of Conanga 539

#O C C Great Plains 943G

#21AR Estrada 7196

Mc Cumber Tremendous 2008

#Lassie 113 of Mc Cumber

#S A V 8180 Traveler 004

#Rosetta 8004 of Best Angus

BW	WWR	YWR	CE	BW	WW	YW	Milk
75	102	101	11	0.1	64	107	18

This nice Packer son should be fine on heifers. He is a full brother in blood to Lot 7.



BEST PACKER 3136

BD:04/08/23

Reg #: 21051885

#Connealy Packer 547

21AR Packer 4313

21AR Estrada 9032

#S A V Resource 1441

Rosetta 074 of Best Angus

Rosetta 5172 of Best Angus

#Feltons Meat Packer 62

Bestrelle of Conanga 539

#O C C Great Plains 943G

#21AR Estrada 7196

Rito 707 of Ideal 3407 7075

S A V Blackcap May 4136

Best Ft Peck 336

Rosetta 8014 of Best Angus

BW	WWR	YWR	CE	BW	WW	YW	Milk
88	96	99	3	2.8	64	111	16

Nice Packer, Resource combo.



ROSETTA 8014 OF BEST ANGUS - Great Granddam of Lot 8



BEST PACKER 3145

BD:04/10/23

Reg #: 21045563

#Connealy Packer 547

21AR Packer 4313

21AR Estrada 9032

Mc Cumber Tribute 702

Rosetta 9041 of Best Angus

#Rosetta 144 of Best Angus

#Feltons Meat Packer 62

Bestrelle of Conanga 539

#O C C Great Plains 943G

#21AR Estrada 7196

Mc Cumber Tremendous 2008

#Lassie 113 of Mc Cumber

#S A V 8180 Traveler 004

#Rosetta 8004 of Best Angus

BW	WWR	YWR	CE	BW	WW	YW	Milk
84	102	100	8	1.7	63	107	19

Packer son out of a beautiful Tribute daughter.



BEST PACKER 3162

BD:04/17/23

Reg #: 21051888

#Connealy Packer 547

21AR Packer 4313

21AR Estrada 9032

Mc Cumber Tribute 702

Elluna 0100 of Best Angus

Elluna 366 of Best Angus

#Feltons Meat Packer 62

Bestrelle of Conanga 539

#O C C Great Plains 943G

#21AR Estrada 7196

Mc Cumber Tremendous 2008

#Lassie 113 of Mc Cumber

#LAR Alliance 64L

Elluna 825 of Best Angus

BW	WWR	YWR	CE	BW	WW	YW	Milk
88	95	118	3	3.4	73	136	18

Nice Packer, Tribute combo.



BEST PACKER 369

BD:03/28/23

Reg #: 21051886

#Connealy Packer 547

21AR Packer 4313

21AR Estrada 9032

Best Box Cross 291

Gale 812 of Best Angus

Gale 6138 of Best Angus

#Feltons Meat Packer 62

Bestrelle of Conanga 539

#O C C Great Plains 943G

#21AR Estrada 7196

#LAR Alliance 64L

#Marie 8005 of Best Angus

Best KTH 269

Gale 247 of Best Angus

BW	WWR	YWR	CE	BW	WW	YW	Milk
88	98	104	7	1.3	60	107	20

Good Packer son.



BEST KTH 8314 - Sire of Lots 11-13

Best KTH 8314 is an outcross for our heifer bull genetics. He was a standout calf for us in 2018. He excelled at weaning, yearling, and one of our top marbling scans. He comes from a strong cow family and he looked the part.



Rosetta 8004 of Best Angus



Rosetta 1100 of Best Angus



Rosetta 401 of Best Angus



LOT 11 - Best KTH 3132



LOT 12 - Best KTH 362



BEST KTH 3132

BD:04/05/23

Reg #: 21045562

Best KTH 269
Best KTH 8314
#Rosetta 8004 of Best Angus

Best Box Cross 291
Miss Wix 120 of Best Angus
Miss Wix 9026 of Best Angus

#CAR Duke 104
Gale 7024 of Best Angus
#Sinclair Extra 4X13
Rosetta 1100 of Best Angus
#LAR Alliance 64L
#Marie 8005 of Best Angus
Mc Cumber Tribute 702
#Rosetta 266 of Best Angus

BW	WWR	YWR	CE	BW	WW	YW	Milk
75	96	104	12	-0.4	48	96	27

Nice heifer bull. Heifer bull pedigree and all ancestors for the first four generations.



BEST KTH 362

BD:03/28/23

Reg #: 21066060

Best KTH 269
Best KTH 8314
#Rosetta 8004 of Best Angus

Best Box Cross 291
Rosetta 111 of Best Angus
Rosetta 9008 of Best Angus

#CAR Duke 104
Gale 7024 of Best Angus
#Sinclair Extra 4X13
Rosetta 1100 of Best Angus
#LAR Alliance 64L
#Marie 8005 of Best Angus
Mc Cumber Tribute 702
#Rosetta 144 of Best Angus

BW	WWR	YWR	CE	BW	WW	YW	Milk
64	103		16	-2.8	49	90	28

Sleep all night heifer bull. Consistent calving ease pedigree.



BEST KTH 3106

BD:03/31/23

Reg #: 21045558

Best KTH 269
Best KTH 8314
#Rosetta 8004 of Best Angus

Best Rainmaker 7008
Rosetta 1124 of Best Angus
Rosetta 825 of Best Angus

#CAR Duke 104
Gale 7024 of Best Angus
#Sinclair Extra 4X13
Rosetta 1100 of Best Angus
#Sitz Rainmaker 11127
Marie 7010 of Best Angus
Angus Alliance Winchester975
Rosetta 2003 of Best Angus

BW	WWR	YWR	CE	BW	WW	YW	Milk
75	86	99	10	0.4	46	94	23

He should work on heifers.



LOT 13 - Best KTH 3106



BEST WESTERN 373 • Sire of Lots 14-18

He was a real standout in the 2021 calf crop. He sires great dispositions and a little extra frame and performance.



GALE 7024 OF BEST ANGUS • Granddam of Lot 15



LOT 14 • Best Western 373



LOT 15 • Best Western 389



BEST WESTERN 373

BD:03/28/23

Reg #: 20868289

Best Winchester 942
Best Western 1139
Rosetta 7011 of Best Angus

#Boyd New Day 8005
Best Everelda Entense 7007
Sitz Everelda Entense 3738

Angus Alliance Winchester975
#Miss Marie 250 of Best Angus
#Sitz Rainmaker 11127
#Rosetta 144 of Best Angus
#A A R New Trend
S V F Forever Lady 57D
Leachman Prime Time
Sitz Everelda Entense 3133

BW	WW	YWR	CE	BW	WW	YW	Milk
90	106	102	3	2.9	63	104	24

Nice Western calf out of an Everelda Entense.



BEST WESTERN 389

BD:03/28/23

Reg #: 21066061

Best Winchester 942
Best Western 1139
Rosetta 7011 of Best Angus

Best KTH 269
Gale 8315 of Best Angus
Gale 7024 of Best Angus

Angus Alliance Winchester975
#Miss Marie 250 of Best Angus
#Sitz Rainmaker 11127
#Rosetta 144 of Best Angus
#CAR Duke 104
Gale 7024 of Best Angus
#S A V 8180 Traveler 004
#Gale 120 of Mc Cumber

BW	WW	YWR	CE	BW	WW	YW	Milk
90	100	100	7	1.6	54	97	24

Real good Western son out of one of our donors. He is extremely docile as well.





LOT 16 • Best Western 3113



LOT 18 • Best Angus 327



BEST WESTERN 3113

BD:04/01/23

Reg #: 21066062

Best Winchester 942
Best Western 1139
Rosetta 7011 of Best Angus

Mc Cumber Tribute 702
Marie 0035 of Best Angus
Marie 367 of Best Angus

Angus Alliance Winchester975
#Miss Marie 250 of Best Angus
#Sitz Rainmaker 11127
#Rosetta 144 of Best Angus
Mc Cumber Tremendous 2008
#Lassie 113 of Mc Cumber
#LAR Alliance 64L
Marie 7010 of Best Angus

BW	WW	YWR	CE	BW	WW	YW	Milk
102	102	107	-3	6	66	122	24

Good looking bull that should add some extra weight to his calf crop.



BEST WESTERN 3124

BD:04/05/23

Reg #: 20860807

Best Winchester 942
Best Western 1139
Rosetta 7011 of Best Angus

Angus Alliance Winchester975
Lassie 8039 of Best Angus
#Lassie 104 of Circle V

Angus Alliance Winchester975
#Miss Marie 250 of Best Angus
#Sitz Rainmaker 11127
#Rosetta 144 of Best Angus
#N Bar Emulation EXT
Coleman Donna 386
S R Alliance 904
Lassie 6199 of Mc Cumber

BW	WW	YWR	CE	BW	WW	YW	Milk
88	105	94	6	1.6	56	92	22

Dam is moderate framed with excellent natural thickness and a beautiful front end and udder.



BEST WESTERN 327

BD:03/22/23

Reg #: 21045556

Best Winchester 942
Best Western 1139
Rosetta 7011 of Best Angus

Best Box Cross 291
Rosetta 0114 of Best Angus
Rosetta 8014 of Best Angus

Angus Alliance Winchester975
#Miss Marie 250 of Best Angus
#Sitz Rainmaker 11127
#Rosetta 144 of Best Angus
#LAR Alliance 64L
#Marie 8005 of Best Angus
#Leachman Right Time
#Rosetta 149 of Best Angus

BW	WW	YWR	CE	BW	WW	YW	Milk
98	117	105	2	3.1	62	103	28

This bull has performed well. What is unique about this bull is that he is still very moderate.





LOT 19 • Best Rainmaker 3207



BEST RAINMAKER 3207

BD:05/10/23

Reg #: 21054089

Best Rainmaker 7008

Best Rainmaker 1135

Rosetta 771 of Best Angus

Mc Cumber Rito Rolette 1108

#Miss Wix 436 of Mc Cumber

#Miss Wix 062 of Mc Cumber

#Sitz Rainmaker 11127

Marie 7010 of Best Angus

#Sinclair Fortunate Son

Rosetta 3021 of Best Angus

Sinclair Entrepreneur 8R101

B Pride 636 of Mc Cumber

Sitz Rainmaker 6536

Miss WX 6145 of Mc Cumber

BW	WWR	YWR	CE	BW	WW	YW	Milk
88	99	107	0	4.1	53	102	24

Good performing bull.



BEST RAINMAKER 3167

BD:04/18/23

Reg #: 21045557

Best Rainmaker 7008

Best Rainmaker 1135

Rosetta 771 of Best Angus

#LAR Alliance 64L

Rosetta 3026 of Best Angus

#Rosetta 8016 of Best Angus

#Sitz Rainmaker 11127

Marie 7010 of Best Angus

#Sinclair Fortunate Son

Rosetta 3021 of Best Angus

#Sitz Alliance 7617

Eileenmere Diamond 16I L A R

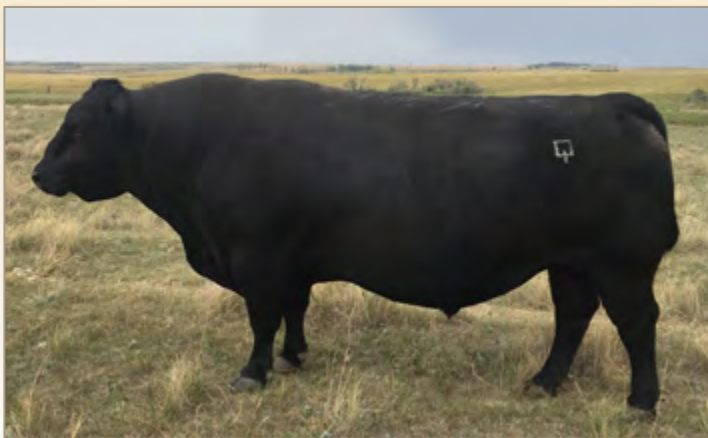
#Leachman Right Time

#Rosetta 149 of Best Angus

BW	WWR	YWR	CE	BW	WW	YW	Milk
94	116	118	-1	4	61	115	31

He has been one of the top performers.





BEST BOX CROSS 291 - Sire of Lots 21-22

We sold Box Cross to Ash Coulee Angus in 2013. His progeny dominated their bull sale for years. Scott still has customers asking for heifer bulls sired by Box Cross. His calves come easy at birth and sell with the bunch in the fall. The box cross females are moderate framed and productive. He was the main sire we used last year in our heifer program.



BEST BOX CROSS 383

BD:03/28/23

Reg #: 21051887

#LAR Alliance 64L
Best Box Cross 291
#Marie 8005 of Best Angus

Best Rainmaker 7008
Lassie 101 of Best Angus
Lassie 8050 of Best Angus

#Sitz Alliance 7617
Eileenmere Diamond 161 L A R
#CAR Duke 104
C A R Miss Viking 604
#Sitz Rainmaker 11127
Marie 7010 of Best Angus
Angus Alliance Winchester975
#Lassie 104 of Circle V

BW	WWR	YWR	CE	BW	WW	YW	Milk
78	101	101	11	-1	49	91	28

Sure thing heifer bull.



BEST BOX CROSS 3107

BD:03/31/23

Reg #: 21069102

#LAR Alliance 64L
Best Box Cross 291
#Marie 8005 of Best Angus

Mc Cumber Tribute 702
Rosetta 1026 of Best Angus
#Rosetta 8016 of Best Angus

#Sitz Alliance 7617
Eileenmere Diamond 161 L A R
#CAR Duke 104
C A R Miss Viking 604
Mc Cumber Tremendous 2008
#Lassie 113 of Mc Cumber
#Leachman Right Time
#Rosetta 149 of Best Angus

BW	WWR	YWR	CE	BW	WW	YW	Milk
70	100	100	14	-2	41	81	31

He should be a sleep all night heifer bull.



LOT 22 - Best Box Cross 383



BEST DOC 322

BD:03/28/23

Reg #: 20854747

Coleman Doc 2261
Brown Dynamic 9003
Brown Rosetta 7094

#S A V Regard 4863
BRMF Blackcap May 8962-8016
S A V Blackcap May 8962

#Wulffs Ext 6106
Coleman Donna 989
#S A V Regard 4863
A C Rosetta 736
#S A V Resource 1441
#S A V Blackcap May 5530
#S A V 8180 Traveler 004
#S A V May 2397

BW	WWR	YWR	CE	BW	WW	YW	Milk
95	98	98	-8	5.8	67	110	21

Larger framed bull that should sire extra payweight.



BEST RESOURCE 3139

BD:04/09/23

Reg #: 21045561

#S A V Resource 1441
Best Resource 060
#Rosetta 144 of Best Angus

Best Box Cross 291
#Best Blackbird Blossom 937
#Blackbird Blossom 7018 Best

Rito 707 of Ideal 3407 7075
S A V Blackcap May 4136
#S A V 8180 Traveler 004
#Rosetta 8004 of Best Angus
#LAR Alliance 64L
#Marie 8005 of Best Angus
#Sinclair Fortunate Son
A C Blackbird Blossom 533

BW	WWR	YWR	CE	BW	WW	YW	Milk
88	95	96	3	2.7	51	94	32

Nice Resource grandson.



LOT 25 - Best New Day 3141



BEST NEW DAY 3141

BD:04/09/23

Reg #: 20854843

#GDAR Game Day 449
Best Game Day 1011
Sitz Everelda Entense 3738

#Sitz Rainmaker 11127
Rosetta 7034 of Best Angus
#Rosetta 144 of Best Angus

#Boyd New Day 8005
#G D A R Miss Wix 474
Leachman Prime Time
Sitz Everelda Entense 3133
Sitz Rainmaker 8075
Sitz Emma E 417L
#S A V 8180 Traveler 004
#Rosetta 8004 of Best Angus

BW	WWR	YWR	CE	BW	WW	YW	Milk
90	102	105	5	2.4	56	103	27

Dam is one of our larger framed cows. I would expect him to sire a little more frame and performance.

Classy Red Favors

DUKE JOE JACK
FAVORABLE INTENTIONS
RITA RED JACKIE
Classy Red Favors
MR JOES SONG
WATCH MY CLASSY SONG
MGM MY CLASSY BABE

JOE JACK HONEY BAR
REDS DUTCHESS
MR BARON RED
LITTLE ORPHAN JACKIE
MR BARON RED
WATCH JOES SONG
BOSTON DEE BAR
CLASSY VANZI HONEY

2018 AQHA STALLION
#5882961

HIS GET ARE HPI ELIGIBLE!

LTE: \$62,625

LTE of AQHA Points:
7 Heading
17 Heeling
1 Performance Halter
Performance ROM
2023 & 2024 World
Show Qualifier



*First Foal Crop
Arrives in 2025!*



Best Angus Sales

BADLANDS ANGUS ALLIANCE BULL & BRED FEMALE SALE

12/4/24 • Dickinson, ND
60 2-Yr-Old Angus Bulls
100 Registered Bred Females
700 Commercial Bred Heifers

ANNUAL PRODUCTION SALE

3/3/25 • Watford City, ND
80 Yearling Angus Bulls
10 Two-Year-Old Angus Bulls
Ranch-Broke Horses



Pete & Vawnita Best • Watford City ND
701-570-6959 • bestangus@yahoo.com
www.BestAngusandQuarterHorses.com



**AARON & SHEYNA STROMMEN
CASSIDY, COOPER & CLINT**

1550 70th St Box 7 • Solen, ND 58570
(701) 445-2020 • (701) 290-7983

strommen@westriv.com •   

www.StrommenRanch.com

Welcome to the 2024 Badlands Angus Alliance Bull & Bred Female Sale. We are proud to partner with our friends the Bests and Talkingtons and our respective customers to offer this unique sale. It is our goal to continue this sale as the premier source for maternal Angus genetics in western North Dakota.

Our herd consists of fertile, functional, easy-fleshing cattle that raise big calves without creep feed. We believe that true profitability in the beef business is driven by cattle that have the Maternal POWER® to do more with less. As your seedstock provider, we want your operation to be profitable and sustainable for generations with cattle that can withstand market pressure, as well as environmental challenges. Through rains or drought, we ask our stock to thrive in a Northern Plains, grass-based environment with minimal supplementation. They must do more with less.

Strommen Ranch cows must calve annually and wean a calf that is a high percentage of its dam's bodyweight. They must also possess the basic phenotypic traits to cover country, breed on time, have the smarts and mothering ability to do it on their own, all while performing under the conditions that Mother Nature has dealt us. We select for fertility, longevity, sound structure and realistic performance in the cow herd. Cattle that breed early in the cycle, are structurally sound and can raise big calves efficiently in a practical environment with minimal inputs are the kind of cattle we produce and believe will have a positive impact on your bottomline now and into the future.

The bulls we're bringing to Dickinson embody this philosophy. Retained expressly for this sale, they are rugged, stout, sound, packed with generations of Maternal POWER® and are ready for service in big country. We look forward to seeing you Dec. 4, 2024, and invite you to our ranch, northeast of Solen, ND, Feb. 15, 2025, at 3 p.m. CST, for our Maternal POWER® Angus Bull Sale, where we'll sell 100 Angus bulls, including yearlings and a small group of coming 2-year-olds.

Aaron & Sheyna, Cassidy, Cooper & Clint Strommen



MATERNAL POWER® ANGUS BULL SALE

At the Ranch | **Feb. 15, 2025** | Solen, N.D.

Selling **100 ANGUS Bulls** by BC Robust 0807, SAV Easy Street 2289, Bruin Torque 5261, SAV Glory Days 1832, S R Silverado 083



Bruin Torque 5261






SAV Easy Street 2289



BC Robust 0807

STROMMEN RANCH: 4 miles NE of Solen, ND

Aaron & Sheyna Strommen | (701) 290-7983 |    /Strommen Ranch
www.StrommenRanch.com



S R LADY BLUE 118



S R CLOVA PRIDE 315



S R LADY BLUE 585



S R BARBARAMERE NELL 412



S R EMMA E 695

MATERNAL POWER™



S R DOROTHY IDEAL 6112



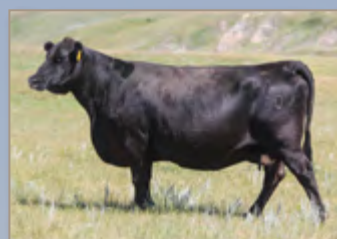
S R MISS WIX 499



S R BONNIE BELLE 408



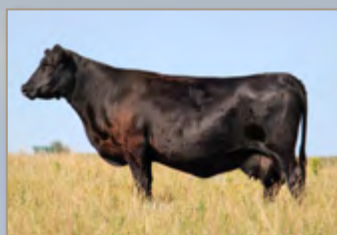
S R TRAVETT 666



S R POLLY 804



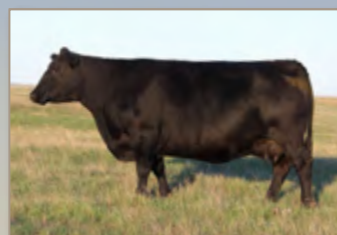
S R BLACKCAP 5109



S R LUCY 951



S R ELDORENE 966



S R O LASS 550



S R POLLY 7110



S R BEAUTY 425



S R EMMA E 375



S R BETTY 3210



Use the camera app on your smart phone to scan this QR Code for a video of our ranch or go to www.StrommenRanch.com to watch.



THESE FEMALES ARE THE BACKBONE OF OUR COWHERD!
REPRESENTING 23 YEARS OF BREEDING FOR MATERNAL GENETICS





LOT 26 • S R Revolution 3516



S R REVOLUTION 3516

BD:03/19/23

Reg #: 20842709

#Tehama 717 Band 876
#Tehama Blackcap Revolution
#Tehama Blackcap E406

#O C C Paxton 730P
S R Lady Blue 118
#S R Lady Blue 631

Tehama Band 717
#Tehama Echo B287
#Paramont Ambush 2172
Blackcap of Tehama C161
O C C Focus 813F
O C C Blackbird 736K
Oak Hollow 7709 of 1318 1118
Farview Lady Blue 2228

BW	WWR	YWR	CE	BW	WW	YW	Milk
99	ET	ET	2	2.6	63	95	25

Dam's WR 5/115. Pathfinder Granddam WR 7/106. Here's the first of four flush brothers by Pathfinder sire, Blackcap Revolution. Their productive dam by OCC Paxton has 66 progeny recorded at AAA. Buy in confidence as these brothers will move your program forward for maternal production.



S R LADY BLUE 118 • Dam of Lots 26-29



Cooper graduated from Flasher Public High School in May.



OCC PAXTON 730P • Maternal Grandsire of Lots 26-29



LOT 27 • S R Revolution 3154

27

S R REVOLUTION 3154

BD: 03/23/23

Reg #: 20842707

BW	WWR	YWR	CE	BW	WW	YW	Milk
99	ET	ET	2	2.6	63	95	25

28

S R REVOLUTION 3531

BD: 03/21/23

Reg #: 20842710

BW	WWR	YWR	CE	BW	WW	YW	Milk
88	ET	ET	2	2.6	63	95	25

29

S R REVOLUTION 3534

BD: 03/22/23

Reg #: 20849738

#Tehama 717 Band 876
#Tehama Blackcap Revolution
#Tehama Blackcap E406

#O C C Paxton 730P
S R Lady Blue 118
#S R Lady Blue 631

Tehama Band 717
#Tehama Echo B287
#Paramont Ambush 2172
Blackcap of Tehama C161
O C C Focus 813F
O C C Blackbird 736K
Oak Hollow 7709 of 1318 1118
Farview Lady Blue 2228

BW	WWR	YWR	CE	BW	WW	YW	Milk
98	ET	ET	2	2.6	63	95	25

Dam's WR 5/115. Pathfinder Granddam WR 7/106. Here's a group of flush brothers by Pathfinder sire, Blackcap Revolution. Their productive dam by OCC Paxton has 66 progeny recorded at AAA. Buy in confidence as these brothers will move your program forward for maternal production.



S R LADY BLUE 585 • Maternal Sister to Lots 26-29



TEHAMA BLACKCAP REVOLUTION • Sire of Lots 26-29



LOT 30 • S R Epitome 3720

BUILDING DEMAND FOR *your* HEIFERS

We are proud of the herds our customers are developing with Strommen Ranch, Talkington Angus and Best Angus genetics and that is why **we strive to help our customers capture additional value for their females** through the Badlands Angus Alliance, where our collective customers have marketed more than 2,500 bred females since 2018. Many of those heifers have commanded a \$200 to \$500 per head premium over other bred heifer sales in the region!

The Badlands Angus Alliance continues to be the **premier sale in Western North Dakota for source and genetic verified Angus replacement females**. It demonstrates the strong demand we've helped build for genetically sourced cattle of maternal pedigree.



S R EPITOME 3720

BD:03/24/23

Reg #: 20861046

#O C C Paxton 730P
O C C Epitome 630E
O C C Dixie Erica 730W

Ellingson Attraction 3326
#V Reich Annie F207
#V Reich Annie 447

O C C Focus 813F
O C C Blackbird 736K
O C C Rear End 751R
O C C Dixie Erica 776M
E A Main Attraction 8014
E A Landmark 823
#Connealy Thunder
V Reich Annie 231

BW	WW	YWR	CE	BW	WW	YW	Milk
76	107		10	-0.3	58	98	25

Recommended for use on heifers or cows. The only Epitome son in the sale, and we think he's very good. His Pathfinder Dam has a progeny WR 4/106 with a 366-day calving interval. He stems from an ultra-productive Pathfinder Great Granddam.



S R SILVERADO 3717

BD:03/23/23

Reg #: 627462126

S A V Rainfall 6846
S R Silverado 083
#S R Dorothy Ideal 604

#3F Epic 4631
Reich Blackcap G503
Reich Blackcap E539

#Coleman Charlo 0256
S A V Blackcap May 4136
#Connealy Capitalist 028
S R Dorothy Ideal 471
Varilek Product 2010 04
Zebo Queen 1072
Ellingson Statistics 2168
Reich Blackcap 5254

BW	WW	YWR	CE	BW	WW	YW	Milk
86	109						

Commercial bull



Flu Brothers - LOTS 32-34

32

S R RAINMAKER 3129

BD: 03/17/23

Reg #: 20848197

BW	WWR	YWR	CE	BW	WW	YW	Milk
85	ET	ET	4	1.9	66	120	34

33

S R RAINMAKER 3533

BD: 03/22/23

Reg #: 20848298

BW	WWR	YWR	CE	BW	WW	YW	Milk
85	ET	ET	5	1.8	57	106	34

34

S R RAINMAKER 3524

BD: 03/20/23

Reg #: 20848296

#Basin Rainmaker 2704
#Basin Rainmaker 4404
Basin Joy 1036

#GDAR Game Day 449
#S R Miss Wix 3110
#Miss Wix 145 of Circle V

#Basin Rainmaker P175
#Basin Erica 7520 BV
#Basin Payweight 107S
Basin Joy 566T
#Boyd New Day 8005
#G D A R Miss Wix 474
S R Alliance 904
Miss Wix 6227 of Mc Cumber

BW	WWR	YWR	CE	BW	WW	YW	Milk
84	ET	ET	5	1.8	57	106	34

Recommended for use on heifers or cows. This trio of Rainmaker 4404 sons out of the Pathfinder dam, Miss Wix 3110, would be a nice group of brothers to add functional traits that commercial cattlemen need for profitability: fertility, good feet, udder quality, fleshing ability, mothering ability and production. Donor Dam has a progeny WR 9/107 with a 366-day calving interval. She scores a 10 on udder and disposition. Pathfinder Granddam has a progeny WR 4/104 with a 367-day calving interval.



LOT 32 • S R Rainmaker 3129



LOT 33 • S R Rainmaker 3533



S R MISS WIX 680 • Maternal sister to Lots 32, 33 and 34



Left: This fall Clint received a special visit from U.S. Navy SEAL Captain Nick (second from right) and good buddy Hunter Barreth (far right). During the visit, Nick, Hunter and Clint talked about S.E.A.L. training, Angus cattle, 4-H lamb projects, grasshoppers, rodeos and ranching. We ended the afternoon in front of our freshly painted Certified Angus Beef® brand logo. Soldiers, cowboys and Angus beef. Pretty hard to top an afternoon like that!



LOT 35 - S R Rainmaker 3118



S R RAINMAKER 3118

BD:03/15/23

Reg #: 20848178

Basin Rainmaker 2704
#Basin Rainmaker 4404
Basin Joy 1036

#Tehama Blackcap Revolution
S R Clova Pride 0118
#S R Clova Pride 315

#Basin Rainmaker P175
#Basin Erica 7520 BV
#Basin Payweight 107S
Basin Joy 566T
#Tehama 717 Band 876
#Tehama Blackcap E406
#O C C Paxton 730P
S R Clova Pride 725

BW	WWR	YWR	CE	BW	WW	YW	Milk
93	89	85	1	2.8	52	85	27

One of our favorite bulls in this offering. He had a slow start, but this bull has become one of the best bulls in the pen. His mother is one of our favorite Revolution daughters and scores a 9 on udder and an 8 on disposition with a 366-day calving interval. She has settled to her AI service every year. Pathfinder Granddam has a progeny WR of 8/105



S R CLOVA PRIDE 315 - Maternal Granddam of Lot 35



S R RAINMAKER 339

BD:03/08/23

Reg #: 20842679

Basin Rainmaker 2704
#Basin Rainmaker 4404
Basin Joy 1036

#Tehama Blackcap Revolution
S R Dorothy Ideal 151
S R Dorothy Ideal 6112

#Basin Rainmaker P175
#Basin Erica 7520 BV
#Basin Payweight 107S
Basin Joy 566T
#Tehama 717 Band 876
#Tehama Blackcap E406
#S A V Resource 1441
S R Dorothy 968

BW	WWR	YWR	CE	BW	WW	YW	Milk
77	100	102	4	2.1	64	114	28



S R DOROTHY IDEAL 6112 - Maternal Granddam of Lot 36



LOT 37 - S R Torque 3210



S R TORQUE 3210

BD:04/24/23

Reg #: 20842703

#S A V 004 Density 4336
#Bruin Torque 5261
Falcon Blackbird 6071

#O C C Great Plains 943G
S R Betty 3210
M H Betty 916

#S A V 8180 Traveler 004
S A V May 7238
#Connealy Dateline
#Vermilion Blackbird 5044
#N Bar Emulation EXT
Dixie Erica of C H 1019
#Papa Durabull 9805
V D A R Betty 23

BW	WW	YWR	CE	BW	WW	YW	Milk
85	109	100	6	1.7	55	99	24

This Torque son is the last son of our Betty 3210 female. She has a progeny WR 9/101 with a 371-day calving interval. Scores an 8.5 on udder and 7 on disposition. His Dam settled to her AI service 8/9 years and his very productive Granddam was part of our donor pen and stuck to her AI service every year.



S R TORQUE 320

BD:03/07/23

Reg #: 20842677

#S A V 004 Density 4336
#Bruin Torque 5261
Falcon Blackbird 6071

S A V Rainfall 6846
S R Polly 0154
S R Polly 837

#S A V 8180 Traveler 004
S A V May 7238
#Connealy Dateline
#Vermilion Blackbird 5044
#Coleman Charlo 0256
S A V Blackcap May 4136
#Koupal Advance 28
S R Polly 687

BW	WW	YWR	CE	BW	WW	YW	Milk
77	103	103	10	0.4	58	107	29

Recommended for use on heifers or cows. Here's a Torque son who's dam has a progeny WR 2/111. His Rainfall dam scores 10 on udder and 10 on disposition and a perfect 365-day calving interval.



S R GLORY DAYS 371

BD:03/11/23

Reg #: 20843681

S A V America 8018
S A V Glory Days 1832
#S A V Madame Pride 3145

#Bruin Torque 5261
S R Beauty 0128
S R Beauty 765

#S A V President 6847
S A V Madame Pride 0075
#S A V Priority 7283
S A V Madame Pride 1171
#S A V 004 Density 4336
Falcon Blackbird 6071
#S A V Resource 1441
S R Beauty 333

BW	WW	YWR	CE	BW	WW	YW	Milk
90	88	102	3	4.2	63	127	20

More frame and growth in this son of Glory Days.



S R GLORY DAYS 3123

BD:03/17/23

Reg #: 20843742

S A V America 8018
S A V Glory Days 1832
#S A V Madame Pride 3145

#Sinclair Emulation XXP
S R Miss Wix 828
#S R Miss Wix 591

#S A V President 6847
S A V Madame Pride 0075
#S A V Priority 7283
S A V Madame Pride 1171
#N Bar Emulation EXT
#N Bar Primrose Y3051
#S A V Resource 1441
Miss Wix 114 of Circle V

BW	WW	YWR	CE	BW	WW	YW	Milk
82	94	95	5	1.8	63	114	20

Nicely made Glory Days son from a Dam with a progeny WR 2/100 that scores a 9 on udder and 10 on disposition.



LOT 41 • S R Stellar 3100



S R STELLAR 3100

BD:03/14/23

Reg #: 20845404

#Mohnen Substantial 272
#Sitz Stellar 726D
SITZ Pride 200B

S A V Estocolmo 8331
S R Bonnie Belle 0178
S R Bonnie Belle 8133

#Benfield Substance 8506
Mohnen Glyn Mawr Elba 1758
#Connealy Final Product
#Sitz Pride 308Y
#Coleman Charlo 0256
S A V Blackcap May 3501
#Sitz 4 Aces 4551
#S R Bonnie Belle 104

BW	WWR	YWR	CE	BW	WW	YW	Milk
75	95	96	7	-0.5	60	106	20

Recommended for use on heifers or cows. His dam scores a 9 on udder and disposition with a 371-day calving interval and has settled to her AI service every year.



SAV ESTOCOLMO 8331 • Maternal Grandsire of Lot 41



S R STELLAR 350

BD:03/09/23

Reg #: 20845409

#Mohnen Substantial 272
#Sitz Stellar 726D
SITZ Pride 200B

S A V Rainfall 6846
S R Clova Pride 1105
S R Clova Pride 985

#Benfield Substance 8506
Mohnen Glyn Mawr Elba 1758
#Connealy Final Product
#Sitz Pride 308Y
#Coleman Charlo 0256
S A V Blackcap May 4136
#Bruin Torque 5261
#S R Clova Pride 5105

BW	WWR	YWR	CE	BW	WW	YW	Milk
73	103	106	6	0.7	64	122	20

Recommended for use on heifers or cows. Proven light birth genetics that will make beautiful females.



LOT 42 • S R Stellar 350

Flush BROTHERS - LOTS 43-46

43

S R RAINMAKER 3144

BD: 03/20/23

Reg #: 627447057

BW	WWR	YWR	CE	BW	WW	YW	Milk
89	ET	ET	-1	3.3	56	94	24

44

S R REVOLUTION 3149

BD: 03/21/23

Reg #: 20848281

BW	WWR	YWR	CE	BW	WW	YW	Milk
87	ET	ET	-1	2.3	56	87	24

45

S R REVOLUTION 3153

BD: 03/23/23

Reg #: 20848283

BW	WWR	YWR	CE	BW	WW	YW	Milk
99	ET	ET	-1	4.2	62	96	24

46

S R REVOLUTION 3159

BD: 03/24/23

Reg #: 20848285

#Tehama 717 Band 876
#Tehama Blackcap Revolution
#Tehama Blackcap E406

N Bar Shadow X4124
Coleman Donna 186
Coleman Donna 975

Tehama Band 717
#Tehama Echo B287
#Paramont Ambush 2172
Blackcap of Tehama C161
#N Bar Emulation EXT
#N Bar Enchantress 4908
#R R Rito 707
Coleman Donna 386

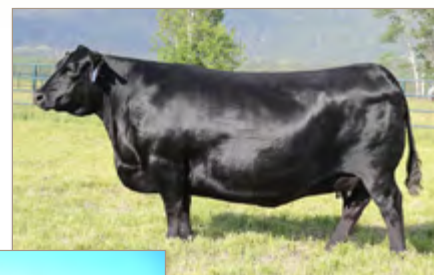
BW	WWR	YWR	CE	BW	WW	YW	Milk
90	ET	ET	-1	3.3	59	92	24

Dam's WR 4/103. Nicely made set of flush brothers with an old-time pedigree. Donna 186 was our choice of Shadow daughters to flush when we were searching for the best living Shadow daughters in the breed.



COLEMAN DONNA 186 - Dam of Lots 43-46

COLEMAN DONNA 975
Maternal Granddam
of Lots 43-46



COLEMAN DONNA 386
Maternal Great
Granddam of Lots 43-46



DVAuction

Broadcasting Real-Time Auctions

Can't make the sale? Bid from home with DV Auction's "real-time" internet bidding service! Buying online is as easy as 1, 2, 3...

1. Create an account at www.dvauction.com under the "register" tab.
2. Apply for bidding approval by clicking on the "details" tab at least 24 hours prior to the auction - a DV representative will notify you when you are approved.
3. Tune in for the sale and make your purchases!

After the sale, contact Aaron, Pete or Shane to arrange transportation. High speed internet is required for successful bidding - be sure to check the lag-time monitor in the top left corner to ensure real-time broadcasts.


Proxy Bidding: If you can't make time to watch the sale, register a proxy bid and DVAuction represent your bid while you're away. Look for the "proxy bid" tab on the auction listing and fill in your maximum bids. They'll handle the rest!

Having troubles? During the auction, you can type a message to the operator at any time for assistance. DVAuction support can always be reached at (402) 474-5557.



SHANE & AMANDA TALKINGTON
ABBY, HADLEY & CADE

3137 136th Ave. SW • Belfield, ND 58622

(701) 290-7222 • 

talkingtonangusranch@yahoo.com

www.TalkingtonAngusRanch.com

Welcome to the 2024 edition of the Badlands Angus Alliance Bull and Bred Heifer Sale. We are honored to continue this one-of-a-kind sale with our partners and friends, Strommen Ranch and Best Angus, all of the reputable cattlemen who consign top quality heifers, and the crew at Stockmen's Livestock Exchange. Since the beginning of this collaboration, our goal has been to make this event the premier source for genetic and source verified, maternally bred commercial Angus females and we are committed to work tirelessly to continue to make this sale stronger year after year.

Talkington Angus Ranch is located between Belfield and Medora on the edge of the Badlands. We are the fourth generation, and our children are the fifth in the 118-year history of our family operation in this location. We focus on balanced trait, maternally oriented cattle. We have for years and continue to stay the course. We don't chase fads or trends or extremes. We believe fertility is the biggest driver of profitability in the cow calf business and longevity is not too far behind that. Structural soundness, fleshing ability, foot quality, udder quality, and good dispositions are a requirement for our herd. We raise cattle that fit our environment, our cows are moderate in their size as they need to be to survive in our rugged terrain and arid climate.

The 13 coming 2-year-old bulls that we are bringing to the Badlands Angus Alliance sale have been developed specifically for this sale with longevity and fertility in mind. These bulls are stout, sound, good footed and developed the right way. They were backgrounded at a rate of 2.5lb/day gain last winter and then ran on pasture from June 1st until September 15th. These bulls have all been parent verified. Please feel free to contact us with any questions or requests for additional data. We always welcome visitors if you have any desire to stop by and evaluate the bulls and their dams.

-Shane, Amanda, Abby, Hadley, and Cade Talkington

ST TALKINGTON ANGUS RANCH

FRIDAY, FEB. 14, 2025

AT THE RANCH ~ BELFIELD, ND
SELLING 75 BULLS



COLEMAN BIG COUNTRY 260



E&B ESSENTIAL 183



S A V TERRITORY 7225

Shane and Amanda Talkington • Belfield, ND • www.TalkingtonAngusRanch.com

For a catalog, please call 701-290-7222 or email • talkingtonangusranch@yahoo.com



Maternally oriented, Balanced-trait philosophy





LOT 47 • SAT Essential 363



SAT ESSENTIAL 363

BD:03/13/23

Reg #: 20775992

E&B Essential

Deer Valley Growth Fund

E&B Lady Dash 4152

S A V Rainfall 6846

SAT Blackbird 1148

R&D Blackbird 205-902

#Basin Payweight 1682
#Deer Valley Rita 36113
#Sitz Dash 10277
#E&b Lady Right Answer 296
#Coleman Charlo 0256
S A V Blackcap May 4136
#S A V 004 Density 4336
R&D Blackbird 167-902

BW	WW	YWR	CE	BW	WW	YW	Milk
68	104	100	10	1.7	74	126	27

363 is a high-capacity bull who is moderate in his frame. He is deep sided, wide chested, possesses exceptional breed character, and has a great disposition. His 13-year-old granddam by Density is one of the very best cows we got out of the R&D herd we purchased in 2016, she owns a progeny WR of 11/102. $\frac{3}{4}$ brother to 365. 363 will work on cows or heifers.



E&B ESSENTIAL • Sire of Lots 47-49



SAV 004 DENSITY 4336 • Great grandsire of Lot 47



SAV RAINFALL 6846 • Grandsire of Lots 47 and 48



LOT 48 • SAT Essential 365



SAT ESSENTIAL 365

BD:03/13/23

Reg #: 20831948

Deer Valley Growth Fund

E&B Essential

E&B Lady Dash 4152

S A V Rainfall 6846

SAT Miss Regis 1168

#BAR Miss Regis 3125

#Basin Payweight 1682
Deer Valley Rita 36113
#Sitz Dash 10277
#E&b Lady Right Answer 296
#Coleman Charlo 0256
S A V Blackcap May 4136
#Coleman Regis 904
BAR Miss 112 1295

BW	WW	YWR	CE	BW	WW	YW	Milk
60	95	100	5	2.5	75	137	26

Eye-appealing bull in a moderate framed package with impeccable foot quality. His granddam is a Pathfinder with a progeny WR of 8/107. $\frac{3}{4}$ brother to 363.



SAT ESSENTIAL 3256

BD:04/05/23

Reg #: 20891810

Deer Valley Growth Fund

E&B Essential

E&B Lady Dash 4152

#Coleman Bravo 6313

SAT Mabel 045

SAT Mabel 8153

#Basin Payweight 1682
Deer Valley Rita 36113
#Sitz Dash 10277
#E&b Lady Right Answer 296
#Coleman Charlo 0256
Coleman Donna 714
Ellingson Versatile
SAT Mabel 6125

BW	WW	YWR	CE	BW	WW	YW	Milk
80	93	97	12	-0.4	48	90	35

Very typical of the Essential sire group, moderate, stout, big middle, and good footed. 3265's calving ease potential is backed by his dam's progeny BR of 3/94 and his granddam's progeny BR of 5/98.



LOT 49 • SAT Essential 3256



remembering DUSTIN CEYNAR

On July 7th the Ceynar family faced an unimaginable tragedy when a house fire destroyed their home and everything in it. Dustin and his son, Clay sustained severe burns and were flown to the Regions Hospital Burn Center in St. Paul, MN. On July 25th, Dustin lost his battle and passed away. Clay remains in the Regions Hospital, bravely working his way towards a recovery.

The agriculture community is small and close knit. Many of you knew Dustin to some extent. He was a fixture at our sale since the beginning, so if you didn't know him, you knew who he was from our two yearly sales. He was passionate about his family ranch, his cattle, coaching shooting sports in McKenzie County, being a good husband to Sara, and above all, being a great father to his three children, Clay, Jake, and KayDee. Dustin was one of the most disciplined commercial cattlemen I worked with. He had implemented a 42-day breeding season and always bought large groups of half brothers to increase uniformity and make breeding decisions within his herd more manageable.

We will be donating 100% of the proceeds from Lot 50, SAT Justice 326, to the Ceynar Family. Lot 50 will be sold in sale order, which will be posted the evening before the sale. An announcement will be made from the block.

We will also be auctioning off

- 100 units of SAT Wolverine 916
- 100 units of SAV Easy Street 2289
- One stallion booking to 2017 AQHA stallion Classy Red Favors

100% of the proceeds going to the Ceynar family.

The benefit semen/horse breeding auction will occur between the sale of the bulls and the commercial bred females.



Join us in support of the Ceynars on sale day or call Shane (701) 290-7222 • Aaron (701) 290-7983 • Pete (701) 570-6959 to leave a bid.



LOT 50 • SAT Justice 326



RL JUSTICE • Sire of Lot 50



LOT 51 • SAT Resource 3277



SAT JUSTICE 326

BD:03/08/23

Reg #: 20777458

#KG Justified 3023
RL Justice
#RL Cash Lady 8988

Deer Valley Unique 5635
SAT Pride 1160
SAT Pride 825

Connealy Judgment
KG Miss Magic 1443
#Barstow Cash
RL Mandate lady 2981
#Plattmire Weigh Up K360
Sitz Henrietta Pride 643T
Ellingson Versatile
SAT Pride 609

BW	WW	YWR	CE	BW	WW	YW	Milk
80	111	101	9	-0.4	61	112	25

326 is a well-balanced bull. He is stout made with a smooth outline, good foot quality, and exudes breed character. This complete bull is backed by a young dam who is off to a great start with an average weaning ratio of 109 on her first two calves. 326 possesses a little different pedigree for most of our customers. He will work on heifers or cows.



SAT RESOURCE 3277

BD:04/16/23

Reg #: 20775907

Coleman Resource 918
SAT Resource 1121
SAT Barbara 7249

Mc Cumber Fortunate 367
R&D Blackbird 302/555
R&D Blackbird 137-302

#S A V Resource 1441
#Coleman Abigale 686
S Fortunate 4160
#SAT Barbara 414
#Sinclair Fortunate Son
Rosetta 7174 of Mc Cumber
#GDAR Game Day 449
R&D Black Bird 528-137

BW	WW	YWR	CE	BW	WW	YW	Milk
82	101	105	6	2.5	62	112	24

Stout made, moderate framed bull with nice muscle expression. His 9-year-old dam has a progeny WR of 7/102. His sire, 1121, is a son we kept back out of the now deceased Resource 918.



LOT 52 • SAT Resource 3305



SAT RESOURCE 3305

BD:05/30/23

Reg #: 20819169

Coleman Resource 918

SAT Resource 1121

SAT Barbara 7249

#S A V Resource 1441

Reich Rachel 588

#Reich Eota Lass 798

#S A V Resource 1441
#Coleman Abigale 686
S Fortunate 4160
#SAT Barbara 414
Rito 707 of Ideal 3407 7075
S A V Blackcap May 4136
#S A V 8180 Traveler 004
BT Eota Lass 6N

BW	WW	YWR	CE	BW	WW	YW	Milk
99	120	100	6	2.8	68	122	28

The youngest bull in our portion of the offering, but he doesn't show it. He is double bred Resource. He is moderate, high volumed, good footed, thick topped, and loaded with breed character. His dam has a progeny WR of 6/104.



Abby graduated from Belfield High School in May.



SAT RAINFALL 335

BD:03/09/23

Reg #: 20775945

S A V Rainfall 6846

SAT Rainfall 164

SAT Britt 9106

McD Uno 631

SAT Beauty 1223

SAT Beauty 845

#Coleman Charlo 0256
S A V Blackcap May 4136
SAT Juneau 706
SAT Britt 649
#C C A Uno 049
Performiss 029
#Brooking Prosecutor 222
SAT Beauty 498

BW	WW	YWR	CE	BW	WW	YW	Milk
81	102	106	4	1.6	69	126	29

The performance standout of our portion of the offering. This bull is long bodied and has a touch more frame than average for our bulls. He is out of a Rainfall son that we raised.



LOT 53 • SAT Rainfall 335



LOT 54 • SAT Renovation 3287



SAT RENOVATION 3287

BD:04/29/23

Reg #: 20834303

#S A V Renown 3439
S A V Renovation 6822
S A V Madame Pride 0151

SAT Revival 210
SAT Mabel 862
SAT Mabel 604

Rito 707 of Ideal 3407 7075
S A V Blackcap May 4136
#S A V 004 Density 4336
S A V Madame Pride 0075
#Coleman Regis 904
SAT Dixie 010
#Rito 112 of 2536 Rito 616
SAT Mabel 406

BW	WWR	YWR	CE	BW	WW	YW	Milk
89	101	107	6	1.3	70	125	23

Lots of cow power behind this bull. His dam owns progeny BR of 5/97 and WR of 4/103, his granddam WR 12/105 and a calving interval of 12/362, she left as a coming 14-year-old cow. His great granddam had a WR of 8/103 and a calving interval of 8/365, she left as a coming 10-year-old cow. His great great granddam was RR Mabel 4440, one of our foundation donors, who possessed progeny WR of 6/110 and YR of 6/110.



S A V RENOVATION 6822 • Sire of Lots 54-56



SAT RENOVATION 3293

BD:05/02/23

Reg #: 20834305

#S A V Renown 3439
S A V Renovation 6822
S A V Madame Pride 0151

Ellingson Versatile
SAT Eola 742
SAT Eola 504

Rito 707 of Ideal 3407 7075
S A V Blackcap May 4136
#S A V 004 Density 4336
S A V Madame Pride 0075
#S A V Resource 1441
SAV Blacklass 124 EA
#Soo Line Motive 9016
OSA MUSTANG RITO112 by X81

BW	WWR	YWR	CE	BW	WW	YW	Milk
77	101	106	4	0.4	61	99	18

3293's calving ease potential is solidified by his dam's BR of 6/93 and his granddam's BR of 4/91.



SAT RENOVATION 3298

BD:05/06/23

Reg #: 20834307

#S A V Renown 3439
S A V Renovation 6822
S A V Madame Pride 0151

#Connealy Capitalist 028
S R Barbaramere Nell 6140
S R Barbaramere Nell 412

Rito 707 of Ideal 3407 7075
S A V Blackcap May 4136
#S A V 004 Density 4336
S A V Madame Pride 0075
#S A V Final Answer 0035
Prides Pita of Conanga 8821
#H A Image Maker 0415
Sitz Barbaramere Nell 798

BW	WWR	YWR	CE	BW	WW	YW	Milk
96	113	106	6	1.6	68	113	26

Good cows behind this bull. His dam owns a WR of 5/104 and his granddam has a BR of 8/96 to go along with a WR of 7/102.



SAT COALITION 3186

BD:03/23/23

Reg #: 20778372

HF Syndicate 213Z
#U-2 Coalition 206C
U2 Erelite 109Z

#S A V Raindance 6848
SAT Eola 9124
SAT Eola 555

#Connealy Consensus 7229
HF Miss Blackcap 27R
Young Dale Xclusive 25X
U-2 Erelite 1X
#Coleman Charlo 0256
S A V Blackcap May 4136
#Soo Line Motive 9016
OSA Rito616 Predest of N717

BW	WWR	YWR	CE	BW	WW	YW	Milk
87	96	100	12	0.4	56	107	32

The only Coalition son in our portion of the offering. 3186 is long-spined with a little extra frame. His dam by Raindance has caught AI every year of her life and has a calving interval of 4/366.



LOT 57 • SAT Coalition 3186



LOT 58 • SAT Fair-N-Square 3288



SAT FAIR-N-SQUARE 3288

BD:04/29/23

Reg #: 20832729

#Woodhill Blueprint
Myers Fair-N-Square M39
Myers Miss Beauty M136

#Cole Creek Cedar Ridge 1V
SAT Lass 733
R&D Lass 601 / 530

#Connealy Confidence Plus
Woodhill Evergreen Z291-B233
#Connealy Thunder
#Myers Miss Beauty M476
#Cole Creek Black Cedar 46P
#Cole Creek Clovanada 49S
Mc Cumber Fortunate 367
R&D Bandy Lassu U601

BW	WWR	YWR	CE	BW	WW	YW	Milk
96	108	98	4	1.9	72	122	21

Big middled, moderate framed bull. His dam has a progeny WR of 5/104 and his coming 10-year-old granddam is still in the herd.



SAT FAIR-N-SQUARE 3302

BD:05/08/23

Reg #: 20832757

#Woodhill Blueprint
Myers Fair-N-Square M39
Myers Miss Beauty M136

Marcys Freightliner 348
SAT Misty 545
Marcys Misty 32

#Connealy Confidence Plus
Woodhill Evergreen Z291-B233
#Connealy Thunder
#Myers Miss Beauty M476
#Connealy Freightliner
Marcys Pride 419
Marcys Dash 111
Marcys Misty 125

BW	WWR	YWR	CE	BW	WW	YW	Milk
88	102	101	2	2.5	79	135	32

Smooth fronted bull whose coming 10-year-old dam is still in the herd.

Commercial BRED FEMALES

These bred females are the type and kind you can use to build a profitable, sustainable herd for generations. They are bred to be easy-fleshing cattle that are productive on minimal inputs, with enough emotional intelligence to be handled with minimal labor, and enough survival instinct to get out and forage, nurture their calves and bring in pounds at weaning. Many of them are carrying A.I. calves from proven calving-ease sires for a short calving period. This year's consignments offer a variety of calving start dates, including March, April and May. They have been ultrasounded for calving dates, sorted for quality and disposition, source verified and bred to known calving-ease genetics. Sale order will be determined by Stockmen's Livestock, as they are managing this portion of the sale.

If you have cattle out of and bred to Talkington, Strommen or Best bulls and you'd like to consign bred heifers in 2025, please contact us!





JORDAN BRAAFLAT, PLAZA, ND

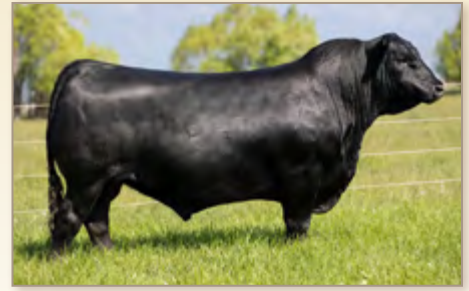
12 A.I. BRED HEIFERS, DUE APRIL 25TH

Contact: **JORDAN & HEATHER BRAAFLAT • (701) 898-1264**

Repeat consignors Jordan and Heather Braaflat always bring a sought-after group of home-raised heifers to the sale. These heifers will be gentle and freeze branded.

Braaflats have been long-time Talkington customers and their cowherd is influenced by bulls such as Renovation, Mustang, Motive, Rainfall, Bravo and Juneau 797.

These heifers were AI'd to Coleman Easy Decition 1539 and were pregnancy ultrasounded by the Minot Veterinary Clinic. The heifers will weigh approximately 1,050 lbs on sale day and have been on a full herd health and mineral program. They were poured with Clean Up II and vaccinated with CattleMaster 4+VL5



COLEMAN EASY DECITION 1539



S A V RENOVATION 6822



ALEX DEIS, LINTON, ND

9 A.I. BRED WOLVERINE DAUGHTERS, DUE MARCH 10TH

29 A.I. BRED PALMER HEIFERS, DUE MARCH 10TH

25 A.I. BRED GOETZ HEIFERS, DUE MARCH 10TH

Contact: **ALEX, NANCY, AMBREE, BRAYLEE & HUXLEE DEIS • (701) 321-1491**

Repeat consignors Alex and Nancy Deis have brought us another nice set of home-raised heifers, as well as heifers they purchased from long-time Strommen Ranch customers, Chris Palmer of Zap, ND, and Shannon and Jennifer Goetz of Richardton, ND. Alex and Nancy do an excellent job developing heifers. This is a top-cut set of heifers that will weigh 1,050 lbs on sale day.

Deis' 9 home-raised heifers are all daughters of SAT Wolverine 916 and they all carry A.I.-sired pregnancies by SAV Easy Street 2289. They embody the goals of the Badlands Angus Alliance program!

The 29 Palmer heifers were purchased through the Badlands Heifer Calf Special in January. Each and every one is a granddaughter of Bruin Torque 5261 from bulls purchased from Strommen Ranch. They were the premium top-cut out of 150 heifer calves and they are all carrying A.I.-sired pregnancies by SAV Easy Street 2289

The 25 Goetz heifers are heavily influenced by Strommen Ranch sons of Resource, Payweight and Torque and they, too, are all carrying A.I.-sired pregnancies by SAV Easy Street 2289.

These heifers were ultrasounded by Steele Vet Clinic for sex and calving date, are on a full health and mineral program and are cake-broke.



BRUIN TORQUE 5261



SAV EASY STREET 2289



SCOTT CYMBALUK, BELFIELD, ND

12 BRED HEIFERS, DUE MARCH 23RD FOR 30 DAYS

Contact: **SCOTT & ANJI CYMBALUK • (701) 260-1174**

Scott and Anji, along with their son Bradie, are the 3rd and 4th generations, respectively, to ranch north of Belfield. Their ranch headquarters is just North of Belfield and the cows are run in rugged Badlands, just north of Talkingtons. These home-raised heifers are easy-fleshing, gentle and cake broke.

These heifers were exposed to three Talkington bulls, sons of SAT Wolverine 916, E&B Essential and Renovation. Cymbaluk's have been long-time Talkington customers. Their cowherd has been influenced by Bravo, Motive, Prosecutor, Versatile and Tahoe.

These heifers will weigh 1,100 lbs on sale day and were pregnancy ultrasounded for sex and calving date by Dr. Chandy Olson. They have had a full herd health and mineral program, were poured with Cydectin and vaccinated with Guardian and Vista 5-VL5.



SAT WOLVERINE 916



E&B ESSENTIAL



JUSTIN LUND, ROSS, ND

25 BRED HEIFERS, DUE MARCH 25TH FOR 21 DAYS

Contact: **JUSTIN, BERNADETTE, PRAYRIE & DAYNE LUND • (701) 629-1424**

Repeat consignors Justin and Bernadette Lund are the 4th generation of Lunds to ranch in Western Mountrail County. These top-of-the-herd home-raised heifers are sired by Strommen Ranch sons of Sinclair Emulation XXP, Emblazon 702, Black Cedar 46P and Navigator sons from Talkington Angus.

Lund's heifers are backed by generations of easy-fleshing, maternally oriented genetics, which should allow for easy calving and profitable cattle production. Their feeder steers will grow well and their heifers will be the keeping-kind. The bred heifers they've consigned were developed on native range in the White Earth Valley. Lund's heifers have been quite popular every time they've been consigned to this sale.

These heifers are bred to sons of Revolver, Packer and Crossbow from Strommen Ranch, Best Angus and Metzger. They were pregnancy ultrasounded by Dr. Kelly Schafer of Burlington, ND. These heifers have received a full health program including BoviShield Gold FP 5+VL5 in the spring, CattleMaster 4+VL5 and Dectomax this fall and they are on Smartlic mineral. They will weigh approximately 1,025 lbs on sale day.



CCA EMBLAZON 702



21AR PACKER 4313



BIRDHEAD RANCH, ARNEGARD, ND

24 BRED HEIFERS, DUE MARCH 31ST FOR 21 DAYS

Contact: **SHANE TALKINGTON • (701) 290-7222**

The Birdhead Ranch is a historic ranch on the southern banks of the Missouri River in Northern McKenzie County, N.D. Dustin's great grandfather purchased the ranch in 1893 and it was re-acquired by his grandfather in 1973. In 2002, Dustin became the owner and operator. Dustin was proud of his ranch and his cattle and worked diligently to continuously improve both. The ranch continues today with his wife and children, Sara, Clay, Jake, and KayDee, and his parents, David and Virginia Ceynar.

This is the first-cycle of the top-cut of home-raised heifers. They are bred to SAT Bravo 024 and two Logo sons from Coleman. Dustin was a very disciplined breeder. He implemented a 42-day calving season and always purchased large groups of half-brothers. He bought his first Talkington bulls in 2003 and continued that over the years. His cattle are influenced by Tahoe, Bravo, Navigator, Juneau 797, Versatile, Gridmaker, and Capitalist.

They were ultrasounded for sex and calving date by Dr. Chandy Olson. They are drenched with SafeGuard, poured with Clean-up II and have been on a full herd health and mineral program. The heifers are cake-broke and will weigh 1,000-1,050 lbs by sale day.



COLEMAN BRAVO 6313



COLEMAN NAVIGATOR



TALKINGTON ANGUS RANCH, BELFIELD, ND

30 A.I. BRED HEIFERS, DUE MARCH 10TH

Contact: **SHANE, AMANDA, ABBY, HADLEY & CADE TALKINGTON • (701) 290-7222**

These heifers are out of our commercial herd. They are all AI-bred to Montana Klondike 2212, our selection from the 2023 Montana Ranch bull sale.

This is the first opportunity in several years that we have had to sell AI-bred heifers. Between expansion opportunities and recovering from a couple of droughts, we are finally at a point where we can make these available again.

Our commercial herd is managed the same way, in a similar environment to our registered herd.

These heifers will weigh 1,050 lbs on sale day and were ultrasounded for sex and calving dates by Dr. Chandy Olson. They've been on a full herd health and mineral program, drenched with Safeguard, poured with Clean-Up II and vaccinated with Vista 5-VL5.



MONTANA KLONDIKE 2212



WARREN WORONEICKI, HEBRON, ND

77 AI-BRED F1 BALDY HEIFERS, DUE MARCH 21ST

Contact: **WARREN & JODIE WORONEICKI • (701) 290-5689**

Repeat consignors, Warren and Jodie Woroneicki ranch north of Hebron, ND and focus on raising high fertility cattle that can thrive with minimal inputs. They practice year-round grazing with minimal hay supplementation. These cattle are handled almost exclusively with horses.

These heifers are all A.I.-bred to E&B Essential. He is a bull Talkingtons own with ST Genetics. He is proving himself to be a sure-bet calving-ease bull. His progeny are stamped with a moderate, stout build, impeccable structure and they are loaded with breed character. Warren buys large groups of half-brothers and some of the recent genetics to influence their herd are Tahoe, Intuition, Right Time, Wolverine and Essential. A portion of these heifers came from John Woroneicki and are out of Strommen Ranch sons of Landmark and Substantial.

These heifers will weigh 1,000 to 1,050 by sale day and were pregnancy ultrasounded for calving dates by Dr. Travis Kuhlka of TK Veterinary Service in Glen Ullin, ND. They have been on a full herd health and mineral program. They've been vaccinated with Vista 5-VL5, poured with Cleanup II and drenched with Valbazen. They have also been vaccinated for pink eye.



SAT WOLVERINE 916



E&B ESSENTIAL



TACHENKO RANCH, GRASSY BUTTE, ND

30 F1 BALDY BRED HEIFERS, DUE APRIL 1ST FOR 21 DAYS

Contact: **CODY TACHENKO & ANGI HOWE • (701) 260-1299**

Repeat consignors, Cody and Angi are the 3rd and 4th generations, respectively, to ranch and run Hereford cattle south of Grassy Butte, ND. Their cow herd is all Hereford, so none of these home-raised F1 baldies will be held back, and they are bringing their top end to the Badlands Angus Alliance, where they were among the high-sellers in 2023. These heifers are extremely gentle and cake-broke.

The heifers were all bred to calving-ease U2 Coalition sons from Talkington Angus. These F1 baldy heifers are exclusively sired by Talkington bulls out of Hereford cows, heavily influenced by Churchill breeding. The Angus influence would be from Talkington Angus sons of Versatile, Right Time, Navigator and Innovation.

These heifers will weigh 1,050 lbs on sale day and were pregnancy ultrasounded for sex and calving date by Dr. Chance Noyce. They have had a full health and mineral program, were drenched with safeguard, poured with Clean-Up II, and vaccinated with Vista 5-VL5.



U2 COALITION



COLEMAN NAVIGATOR 614



CHRIS GOEHRING, MANDAN, ND

20 AI BRED HEIFERS, DUE MARCH 14TH

30 BRED HEIFERS, DUE MARCH 22ND FOR 10 DAYS

18 BRED HEIFERS, DUE APRIL 1ST FOR 10 DAYS

Contact: **CHRIS GOEHRING • (701) 471-3160**

First time consignor Chris Goehring is bringing a beautiful set of heifers he purchased through the Badlands Heifer Calf Special in January from Prairie Diamond Ranch of Hebron, ND. Prairie Diamond Ranch has a long tradition of raising sought-after females and top-quality feeder cattle that consistently top the market. They purchase top-end bulls and have AI'd their heifers and cows for decades. Some of the more recent genetics that would heavily influence this set of heifers would be Rainfall, Charlo, Density and Resource.

The balance of the heifers came from Mike Rott of Hurdsfield, ND and Dave Rodakowski through the Badlands Heifer Calf Special in January. The Rodakowski herd was heavily influenced by sons of Versatile, Revival, Tahoe, Bravo, Rainfall, and Renovation.

The 20 AI-bred heifers are carrying pregnancies by SAT Wolverine 916 and the remaining heifers are bred to Strommen Ranch sons of Rainmaker 4404 and Sitz Stellar 726D. This is a high quality set of heifers. They are gentle, cake-broke and should demand attention sale day.

They were ultrasounded by Dr. Marissa Soderberg of the Steele Veterinary Clinic and will weigh 1,150 lbs. by sale day. They've been on a full health and mineral program including CattleMaster 4 VL5 and Spirovac, poured with Clean-up II and wormed with Valcor injectable.



SAT WOLVERINE 916



S A V RAINFALL 6846



LANCE ROSSOW, FLASHER, ND

40 BRED HEIFERS, DUE APRIL 14TH FOR 25 DAYS

Contact: **LANCE & ASHLEY ROSSOW • (701) 527-7323**

Repeat consignors Lance and Ashley Rossow are bringing a nice group of heifers due to calve April 14 for 25 days. They are bred to Strommen Ranch sons of Revolver and Epitome. The Rossow herd is influenced by Revolver, Early Arrival and S R Silverado 083. A good portion of these heifers are home-raised with the balance originating local herds. They have been sorted for quality and breeding date from a large group. Ashley has done an excellent job getting these heifers cake-broke and gentle and they have been worked with dogs.

The Rossows have been developing heifers for many years and do an excellent job. They are on a full mineral program, were poured with Dectomax and received Vira Shield 6 + VL5 and this fall. They were ultrasounded by Dr. Shaun Bousis, of the Mandan Vet Clinic, Mandan, ND and are estimated to weigh 1,050 lbs on sale day.



S R SILVERADO 083



ROSSOW HEIFERS



JASON ERICKSON, BEULAH, ND

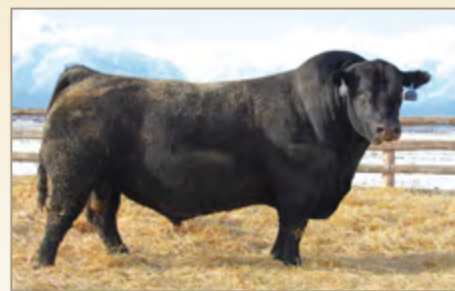
23 BRED HEIFERS, DUE APRIL 15TH FOR 25 DAYS

Contact: **JASON & ANGIE ERICKSON • (701) 290-5158**

Repeat consignors Jason and Angie Erickson of Beulah, ND, are long-time Strommen Ranch bull buyers that are bringing us a top-notch set of bred heifers from their outstanding operation. Maternal Power™ genetics run deep with sires including Rainfall, Motive, Resource and Charlo. Jason has a very discriminating eye and always spends a day before the bull sale sorting through bulls and asking questions.

These heifers have been near the top of this sale in previous years and have had a high level of customer satisfaction. They should weigh 1,050 lbs by sale day and are bred to Strommen Ranch sons of Stellar for April 15th for a 25-day calving window.

They were ultrasounded by Dr. Travis Kuhlka of Glen Ullin, ND and have had a full health and mineral program. They received ScourGuard and Bovishield Gold VL5 this fall, along with being poured with Dectomax.



COLEMAN CHARLO 0256



SAV RESOURCE 1441



CASEY VOIGT, BEULAH, ND

17 AI-BRED HEIFERS, DUE APRIL 10TH

13 BRED HEIFERS, DUE APRIL 20TH FOR 20 DAYS

Contact: **CASEY & JULIE VOIGT • (701) 870-0771**

Casey and Julie Voigt are bringing a group of heifers purchased through the Badlands Heifer Calf Special from Prairie Diamond Ranch of Hebron. Prairie Diamond Ranch has a long tradition of raising sought-after females and top-quality feeder cattle that consistently top the market. They purchase top-end bulls and have AI'd their heifers and cows for decades.

These heifers are cake broke and will weigh about 1,050 lbs by sale day. Twenty are all carrying A.I.-sired pregnancies by SAT Wolverine 916 and the balance are bred to a Strommen Ranch son of Epitome, a Talkington Angus son of Essential and a Best Angus son of Rainfall.

They were ultrasounded by Dr. Terry Hall of Wibaux, MT and have had a full health and mineral program including Bovishield Gold VL5-HB and injectable Dectomax.



SAT WOLVERINE 916



LT BANDWAGON



STROMMEN RANCH, SOLEN, ND

29 AI-BRED HEIFERS, DUE MARCH 10TH

14 AI-BRED HEIFERS, DUE APRIL 1ST FOR 14 DAYS

Contact: **AARON, SHEYNA, CASSIDY, COOPER & CLINT STROMMEN • (701) 290-7983**

These heifers originated from Strommen Ranch customers Ken Schmidt of Solen, ND; Reich Angus of Zap, ND and Jeff Moravchick.

The Ken Schmidt family has a reputation of selecting bulls for maternal and performance and consistently purchases front-end bulls. The steer-mates to these heifers would have the reputation of being one of the top sets of feeder calves in the region. The Reich and Moravchick heifers are closely bred to the Strommen Ranch-raised heifers in this group. These heifers bare the influence of Torque, XXP, President, Revolution, Roughrider, Rider Pride and Resource.

The 29 AI-bred heifers due March 10th are carrying pregnancies by SAV Easy Street 2289, and the 14 AI-bred heifers are also carrying pregnancies by SAV Easy Street, but were bred over a 14-day natural breeding period.

These heifers should weigh 1,100 lbs on sale day and were ultrasounded by Mandan Vet Clinic for sex and calving date. They are gentle and cake broke. They have a full health and mineral program including CattleMaster FP5 and Spirovac VL5, drenched with Safe-Guard and poured with Prozap Insectrin at ultrasound time.



SAV EASY STREET 2289



BRUIN TORQUE 5261



REPLACEMENT HEIFER CALF SPECIAL

Save the date! **2/06/25**
Stockmen's Livestock (East Barn)
Dickinson, ND • 12 p.m. MST

In 2025, we will again host another exclusive opportunity for you to add value to your Strommen, Talkington or Best-influenced females. The Badlands Angus Alliance Replacement Heifer Calf Special is set for Feb. 6, 2025, at Stockmen's Livestock (East barn) in Dickinson, ND. This sale is only open to replacement heifers that are influenced by Strommen Ranch, Best Angus or Talkington Angus genetics.

The replacement heifer calf special is an exciting opportunity for our bull customers to add value to this year's heifer calf crop or for anyone starting a bred heifer development project. Heifer calves sold through the Badlands Angus Alliance Replacement Heifer Calf Special (Jan. 2025) directly qualify for the 2025 Badlands Angus Alliance Bull & Bred Female Sale (Dec. 2025) when they are bred back to Talkington Angus, Strommen Ranch or Best Angus bulls.

Before you market your 2024 heifer calves, contact Aaron, Shane or Pete to discuss the replacement heifer calf special and other marketing opportunities we offer.





DUSTIN HUESKE, RICHARDTON, ND

30 AI-BRED HEIFERS, DUE MARCH 10TH

12 BRED HEIFERS, DUE APRIL 1ST FOR 21 DAYS

7 BRED HEIFERS, DUE APRIL 22ND FOR 21 DAYS

Contact: **DUSTIN & COLEY HUESKE • (701) 290-3448**

First time consignors Dustin & Coley Hueske ranch north of Richardton and are developing a reputation for their heifer development. The heifers they are bringing are a combination of their own home-raised, first-cut heifers and heifers originating from the Tim Meyer herd. These heifers have been heavily influenced by Tahoe, Rainfall and Stellar. There are direct daughters of Stellar in this consignment.

The 30 AI-bred heifers are bred to SAT Wolverine 916 and the bull breeds are bred to a Talkington Angus son of Authority. They will weigh 1,000 lbs by sale day.

These heifers were ultrasounded by Dr. Chance Noyce for sex and calving date. They have a full health and mineral program, including PregGuard Gold FP10, poured with Clean-up II and drenched with SafeGuard.



SAT WOLVERINE 916



SITZ STELLAR 726D



JAY SORENSON, ROSS, ND

15 AI BRED F1 BALDY HEIFERS, DUE MARCH 15

Contact: **JAY & SHAYLA SORENSON • (701) 421-0384**

First time consignors Jay & Shayla Sorenson of Ross, ND, are bringing a home-raised set of F1 baldy heifers. This set of heifers is gentle and used to being handled by horse or ATV. Jay and Shayla added the cow-calf operation to their family farm about 10 years ago and have been diligent in their efforts to continuously make improvements and to build a herd they are proud of. These heifers are AI'd to SAT Wolverine 916 and are out of Topp Hereford bulls. The cowherd originated from females purchased from Justin Lund of Ross, ND and Lambourn from Bowman, ND.

These heifers were ultrasounded by Dr. Shayla Sorenson for sex and calving date. They have a full health and mineral program, including Vira Shield 6-VL5, Scourbos 9 and poured with Ivermectin and they will weigh 1,050 on sale day.



SAT WOLVERINE 916



BOLTZ RANCH, GRASSY BUTTE, ND

22 F1 BALDY HEIFERS, DUE MARCH 13TH FOR 25 DAYS

8 BRED HEIFERS, DUE APRIL 10TH FOR 20 DAYS

9 BRED HEIFERS, DUE MAY 1ST FOR 20 DAYS

Contact: **JED AND BECKY BOLTZ • (701) 590-1560**

This is the first year consigning for the Boltz family. This is certainly a reputation herd in western ND. In recent years they A'd to Capitalist, Summit, and Cedar Ridge. The cow herd history is made up of bulls by Cole Creek Black Cedar, OCC Great Plains, OCC Missing Link, HBR Encore 4161. The heifers are all home raised and bucket fed as calves. The baldies are sired by Hereford bulls from Helblings in Mandan. The heifers are bred to a Winchester son and a 2 year old Boltz used on heifers last year with excellent luck.

These heifers will weigh 1,050 lbs by sale day and have been on a health program, including VL-6 Vira shield, Safeguard drench, Cleanup, and Anthrax vaccine.



CONNEALY CAPITALIST 028



OCC GREAT PLAINS 9436



CALEB MELHOFF, SPIRITWOOD, ND

18 AI BRED HEIFERS, DUE JUNE 22ND

7 BRED HEIFERS, DUE APRIL 1ST FOR 30 DAYS

Contact: **CALEB MELHOFF • (701) 425-6628**

This is the first year consigning for the Melhoffs. They have been developing and selling heifers for 7 years along with their cow calf operation. They sell their heifers privately to repeat buyers.

The heifers being consigned came from the Krebs ranch near Belfield. The Krebs family have been purchasing bulls from 21 Angus and Best Angus the past few years. They focus on calving ease and maternal when selecting their sires. Heifers were cleaned up by a son of Best Box Cross.

The heifers have been developed on grass, handled by horses and four wheelers, synchronized and A'd to Angus Alliance Winchester 975. Winchester has been a tremendous sire for Best Angus. He is an Ext son out of Coleman Donna 386. Best Angus and their customers have bred more than 200 head to Winchester, and all have calved unassisted so far.

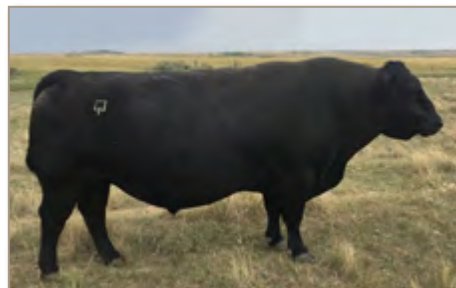
The heifers have been given Vira-Shield and poured with Ivomec and will weigh 1,000 lbs by sale day.



ANGUS ALLIANCE WINCHESTER 975



COLEMAN DONNA 386



BEST BOX CROSS



BEST ANGUS, WATFORD CITY, ND

17 AI BRED HEIFERS, DUE MARCH 20TH

15 BRED HEIFERS, DUE APRIL 1ST FOR 40 DAYS

Contact: **PETE, VAWNITA & KYLE BEST • (701) 570-6959**

These heifers were managed in the same group as all of our registered heifers. They were AI'd to Angus Alliance Winchester 975, Best Box Cross, and cleaned up by ET brothers sired by CAR Hickory 547 out of donor dam Rosetta 261 of Best Angus. These heifers have been handled by horseback, dogs, four wheelers, and on foot. These are all home raised out of our cowherd.

They were ultrasounded by JJ Hovde, vaccinated with Vira Sheild, and poured with Ivomec.



BEST BOX CROSS



ANGUS ALLIANCE WINCHESTER 975



STROMMEN RANCH, SOLEN, ND

8 PUREBRED ANGUS COWS, DUE APRIL 1ST FOR 30 DAYS

9 PUREBRED ANGUS COWS, DUE MAY 1ST FOR 15 DAYS

Contact: **AARON, SHEYNA, CASSIDY, COOPER & CLINT STROMMEN • (701) 290-7983**

These are purebred cows from our registered herd, they just have a little later calving date outside of our short calving window. The May-bred cows are 3-5 years of age and the April-bred cows are mixed age. Most have had sons in our bull sale or daughters retained in our herd. Every cow in this group has many generations of maternal-focused AI genetics stacked into their pedigree.

They are bred to Strommen Ranch sons of Robust and Charlo.

These cows were ultrasounded by Mandan Vet Clinic for sex and calving date. They are gentle and cake broke and sell as commercial cows without papers. They have a full health and mineral program including CattleMaster FP5 and Spirovac VL5, drenched with Safe-Guard and poured with Prozap Insectrin at ultrasound time.



BC ROBUST 0870



SAV ESTOCOLMO 8331

MARKETING

opportunities

THROUGH THE BADLANDS ANGUS ALLIANCE

*If you have cattle heavily influenced by **Talkington Angus**, **Strommen Ranch** or **Best Angus** genetics and you'd like assistance in marketing them, please contact us!*

In addition to helping our customers capture added value for their bred heifers and replacement heifer calves, we are working to help you capture added value for your entire calf crop.

Contact us about these marketing options:

BADLANDS ANGUS ALLIANCE BULL & BRED HEIFER SALE

Dec. 4, 2024 • Stockmen's West, Dickinson

Featuring commercial bred heifers that are out of and bred back to Talkington, Strommen or Best genetics.

BADLANDS ANGUS ALLIANCE REPLACEMENT HEIFER CALF SPECIAL

Feb. 6, 2025 • Stockmen's Livestock, Dickinson

Featuring commercial replacement heifers that are heavily influenced by Talkington, Strommen or Best genetics. (These heifers directly qualify for our bred heifer sale when they are bred back to Talkington, Strommen or Best Angus genetics.)

We have the utmost confidence in the following representatives. They have extensive experience and will represent your cattle with honesty and integrity to help you capture the most value for your operation:

SUPERIOR LIVESTOCK AUCTION VIDEO SALES

Lewistown Livestock Auction • Lewistown, MT

Kyle Shobe 406-366-0472

Stockmen's Livestock • Dickinson, ND

John Fischer 701-290-1606

Austin Henderson 701-471-2673

Dan O'Donnell 406-939-0526

NORTHERN LIVESTOCK VIDEO SALES

Jarvis Sorenson 701-570-6680



BEST ANGUS

PETE & VAWNITA BEST

Watford City, ND • (701) 570-6959 • [f](#)
www.BestAngusAndQuarterHorses.com



STROMMEN RANCH

AARON & SHEYNA STROMMEN

Solen, ND • (701) 290-7983
[f](#) [i](#) [t](#) [g](#) [n](#) [a](#) [p](#) [p](#) [s](#) [t](#) [r](#) [a](#) [n](#) [c](#) [h](#) [c](#) [o](#) [m](#) [www.StrommenRanch.com](#)



TALKINGTON ANGUS

SHANE & AMANDA TALKINGTON

Belfield, ND • (701) 290-7222 • [f](#)
www.TalkingtonAngusRanch.com



For Sale
100
**REGISTERED
BRED FEMALES**

We are excited to offer you this group of bred females we think have the maternal ability to be the "Herd Building Kind". They originated from our own Maternal Power™ herd and the balance from Bar 69 in SD and Schaff Angus Valley both of which are historic multi-generation operations that highly value the Angus female. Some of the genetics represented would be Blackcap Revolution, Stellar, Rainmaker 4404, America, Justified, Glory Days, Powerball and Accomplishment. They are bred to SAV Easy Street 2289, LT Firesteel 1123, Baldrige Badger and pasture sires from our own program.

We invite you to attend the sale, or visit us at Strommen Ranch to sort through these exciting females.



LOT 75 • Sire: S A V Glory Days 1832



LOT 96 • Sire: Pyramid Rainfall 1052



LOT 77 • Sire: KG Justified 3023



LOT 90 • Sire: Sitz Accomplishment 720F



LOT 103 • Sire: Tehama Blackcap Revolution



LOT 100 • Sire: Basin Rainmaker 4404



the **HERD BUILDING** *kind*



AI

SERVICE SIRES



S A V Easy Street 2289



S A V EASY STREET 2289

BD: 3/06/2022

Reg #: 20473600

Marcys Scale Crusher
S A V Ease 0840
S A V Blackcap May 1416

#S A V President 6847
S A V Emblynette 9801
S A V Emblynette 0084

#Sitz Upward 307R
#Marcys Erica 393
Rito 707 of Ideal 3407 7075
S A V Blackcap May 4136
#Coleman Charlo 0256
S A V Blackcap May 4136
#S A V Bixmarck 5682
S A V Emblynette 8411

CE	BW	WW	YW	Milk
12	-1.2	68	118	22



LT Firesteel 1123



LT FIRESTEEL 1123

BD: 02/26/2021

Reg #: 20200746

Connealy Judgment
#KG Justified 3023
KG Miss Magic 1443

#Connealy Confidence Plus
LT Erica 8120
LT Erica 0121

#Connealy Consensus 7229
#Entrine of Conanga 9876
#Sitz Wisdom 481T
KG Miss Magic 3528
#Connealy Confidence 0100
Elbanna of Conanga 1209
#KMK Alliance 6595 I87
L T Erica of Bando 3016

CE	BW	WW	YW	Milk
3	0.2	71	127	31



Baldridge Badger



BALDRIDGE BADGER

BD: 05/12/2018

Reg #: 19478648

#Mogck Bullseye
Hoover No Doubt
Miss Blackcap Ellston J2

#Styles Upgrade J59
Baldridge Isabel Y69
Baldridge Isabel T9351

#MOGCK Sure Shot
Mogck Mary 1255
#SydGen C C & 7
#Miss Blackcap Ellston D154
#Sitz Upward 307R
Plainview Lassie 71B
#Baldridge Kaboom K243 KCF
Baldridge Isabel P4527

CE	BW	WW	YW	Milk
-3	3.4	89	151	17



SAV EMBLYNETTE 8950 • Dam of Lot 75



S A V GLORY DAYS 1832 • Sire of Lot 75



LOT 75 • S A V Emblynette 3137



S A V EMBLYNETTE 3137

BD: 2/23/2023

Reg #: 20631123

S A V America 8018

S A V Glory Days 1832

#S A V Madame Pride 3145

#Coleman Charlo 0256

S A V Emblynette 8950

#S A V Emblynette 3240

#S A V President 6847

S A V Madame Pride 0075

#S A V Priority 7283

S A V Madame Pride 1171

#O C C Paxton 730P

Bohi Abigale 6014

#S A F 598 Bando 5175

#S A V Miss Emblynette 7369

CE	BW	WW	YW	Milk
2	3.8	68	119	26

Dam's WR 4/100. Another Glory Days female from the Emblynette cow family. Should be a beautiful heifer calf by Easy Street. • **Sells AI bred to calve 2/17/2025 to Easy Street with a heifer calf.**



SAV EMBLYNETTE 2184 • Dam of Lot 76



S A V RAINFALL 6846 • Sire of Lot 76



LOT 76 • S A V Emblynette 3570



S A V EMBLYNETTE 3570

BD: 12/9/2022

Reg #: 20700443

#Coleman Charlo 0256

S A V Rainfall 6846

S A V Blackcap May 4136

#S A V 707 Rito 9969

S A V Emblynette 2184

#S A V Emblynette 9981

#O C C Paxton 730P

Bohi Abigale 6014

#S A V 8180 Traveler 004

#S A V May 2397

Rito 707 of Ideal 3407 7075

BR Polly 8077-472

#Leachman Right Time

S A V Emblynette 1182

CE	BW	WW	YW	Milk
4	2.3	57	113	29

Dam's WR 9/101 with a 363-day calving interval. Excellent cross of Rainmaker, Rito, and Emulation from the Emblynette cow family. Pathfinder Granddam. • **Sells AI bred to calve 2/28/2025 to Easy Street with a bull calf.**



LOT 77 • Elsiemere Deb 389



ELSIEMERE DEB 389

BD: 3/15/2023

Reg #: 20941328

Connealy Judgment
#KG Justified 3023
 KG Miss Magic 1443

 Sitz Investment 688B
Elsiemere Deb 774
 Elsiemere Deb 312

#Connealy Consensus 7229
 #Entrine of Conanga 9876
 #Sitz Wisdom 481T
 KG Miss Magic 3528
 #Sitz Investment 660Z
 Sitz Pride 256Z
 SITZ Final Answer 592Y
 Elsiemere Deb 142

CE	BW	WW	YW	Milk
8	-0.3	61	109	28

Dam's WR 4/102 with an individual WR 100 and YR 100. • **Sells AI bred to calve 2/17/2025 to Easy Street.**



ELSIEMERE DEB 347

BD: 3/3/2023

Reg #: 20939372

Connealy Judgment
#KG Justified 3023
 KG Miss Magic 1443

 SITZ Final Answer 592Y
Elsiemere Deb 541
 Elsiemere Deb 336

#Connealy Consensus 7229
 #Entrine of Conanga 9876
 #Sitz Wisdom 481T
 KG Miss Magic 3528
 #S A V Final Answer 0035
 Sitz Everelda Entense 75W
 #Sitz Upward 307R
 Elsiemere Deb 3224

CE	BW	WW	YW	Milk
11	-0.9	61	112	31

Dam's WR 8/102 with a 371-day calving interval. Individual WR 102 and YR 104. • **Sells AI bred to calve 2/17/2025 to Easy Street with a bull calf.**



LOT 79 • Elsiemere Deb 3100



ELSIEMERE DEB 3100

BD: 3/21/2023

Reg #: 20939356

#KG Justified 3023
KG Justified 1034
 KG Kem 9783

 #Connealy Capitalist 028
Elsiemere Deb 727
 Elsiemere Deb 104

Connealy Judgment
 KG Miss Magic 1443
 #KG Resolution 4042
 KG Kem 9058
 #S A V Final Answer 0035
 Prides Pita of Conanga 8821
 #Sitz Dash 10277
 Elsiemere Deb 904

CE	BW	WW	YW	Milk
4	1.4	64	107	32

Dam's WR 6/104 with an individual WR 104 and YR 103. Proven pedigree in this Justified daughter with Capitalist and Sitz Dash. • **Sells AI bred to calve 2/17/2025 to Easy Street with a heifer calf.**



LOT 80 • Rosemary Deb 368



ROSEMARY DEB 368

BD: 3/7/2023

Reg #: 20939381

#Mohnen Substantial 272
#Sitz Stellar 726D
SITZ Pride 200B

#Raven Powerball 53
Rosemary Deb 916
Rosemary Deb 7712

#Benfield Substance 8506
Mohnen Glyn Mawr Elba 1758
#Connealy Final Product
#Sitz Pride 308Y
#PA Power Tool 9108
Raven Emma E 4241
Sitz Investment 688B
Rosemary Deb 451

CE	BW	WW	YW	Milk
6	0	63	111	22

Beautifully made Stellar daughter from a dam by Pathfinder Sire, Powerball. Dam's WR 4/100 with individual WR 107 and YR 103. • *Sells AI bred to calve 2/17/2025 to Easy Street with a bull calf.*



RAVEN POWERBALL 53 • Maternal Grandsire of Lot 80



LOT 81 • Rosemary Deb 381



ROSEMARY DEB 381

BD: 3/12/2023

Reg #: 20939385

#Mohnen Substantial 272
#Sitz Stellar 726D
SITZ Pride 200B

SITZ Atlas 728E
Rosemary Deb 984
Rosemary Deb 912

#Benfield Substance 8506
Mohnen Glyn Mawr Elba 1758
#Connealy Final Product
#Sitz Pride 308Y
Koupals B&B Atlas 4061
#Sitz Barbaramere Nell 22C
Sitz Alliance 503S
#Rosemary Deb 782

CE	BW	WW	YW	Milk
6	-0.1	65	106	26

Dam's WR 4/102 with an individual WR 107 and YR 98. • *Sells bred to calve 4/8/2025 to Pasture Sires.*



LOT 82 • Elsiemere Deb 378



ELSIEMERE DEB 378

BD: 3/10/2023

Reg #: 20939384

#Mohnen Substantial 272
#Sitz Stellar 726D
SITZ Pride 200B

Sitz Game Day 616Z
Elsiemere Deb 684
Elsiemere Deb 331

#Benfield Substance 8506
Mohnen Glyn Mawr Elba 1758
#Connealy Final Product
#Sitz Pride 308Y
#GDAR Game Day 449
#Sitz Henrietta Pride 65S
#GDAR Game Day 449
#Elsiemere Deb 033

CE	BW	WW	YW	Milk
8	-1.2	57	105	21

Should be a beautiful heifer calf sired by Easy Street with 9 Pathfinders in her pedigree. • *Sells AI bred to calve 2/17/2025 to Easy Street with a heifer calf.*



SITZ STELLAR 726D • Sire of Lots 82-87



ELSIEMERE DEB 372

BD: 3/9/2023

Reg #: 20939382

#Mohnen Substantial 272
#Sitz Stellar 726D
SITZ Pride 200B

#Connealy Confidence 0100
Elsiemere Deb 931
Elsiemere Deb 056

#Benfield Substance 8506
Mohnen Glyn Mawr Elba 1758
#Connealy Final Product
#Sitz Pride 308Y
Connealy Tobin
Becka Gala of Conanga 8281
#Connealy Thunder
Elsiemere Deb 705

CE	BW	WW	YW	Milk
7	0.1	67	120	21

Another Stellar daughter from a dam that goes back to proven genetics of Confidence and Thunder. Dam's WR 4/105 with individual WR 104 and YR 103. • *Sells AI bred to calve 3/10/2025 to Easy Street with a bull calf.*



ELSIEMERE DEB 313

BD: 2/1/2023

Reg #: 20939369

#Mohnen Substantial 272
#Sitz Stellar 726D
SITZ Pride 200B

Sitz Invasion 9118
Elsiemere Deb 101
Elsiemere Deb 959

#Benfield Substance 8506
Mohnen Glyn Mawr Elba 1758
#Connealy Final Product
#Sitz Pride 308Y
Sitz Invasion 574D
#Sitz Everelda Entense 5686
#Raven Powerball 53
Elsiemere Deb 366

CE	BW	WW	YW	Milk
6	-0.2	66	109	21

Dam's WR 2/106. This Stellar daughter has an individual WR 106. • *Sells AI bred to calve 2/17/2025 to Easy Street with a heifer calf.*



LOT 85 • Rosemary Deb 363



ROSEMARY DEB 363

BD: 3/7/2023

Reg #: 20939378

#Mohnen Substantial 272
#Sitz Stellar 726D
SITZ Pride 200B

#Connealy Thunder
Rosemary Deb 638
Rosemary Deb 228

#Benfield Substance 8506
Mohnen Glyn Mawr Elba 1758
#Connealy Final Product
#Sitz Pride 308Y
#Baldridge Kaboom K243 KCF
#Parka of Conanga 241
#Sitz Dash 10277
Rosemary Deb 963

CE	BW	WW	YW	Milk
8	-0.7	62	109	18

Individual WR 103 with a YR 109. 3 generation cow-maker pedigree loaded with Pathfinder designation. • **Sells AI bred to calve 2/17/2025 to Easy Street with a bull calf.**



CONNELLY CAPITALIST 028 • Maternal Grandsire of Lot 86



ROSEMARY DEB 354

BD: 3/5/2023

Reg #: 20939374

#Mohnen Substantial 272
#Sitz Stellar 726D
SITZ Pride 200B

#Connealy Capitalist 028
Rosemary Deb 645
Rosemary Deb 070

#Benfield Substance 8506
Mohnen Glyn Mawr Elba 1758
#Connealy Final Product
#Sitz Pride 308Y
#S A V Final Answer 0035
Prides Pita of Conanga 8821
#Sitz Alliance 6595
Rosemary Deb 580

CE	BW	WW	YW	Milk
5	0.5	59	103	21

Dam's 5/99 with an individual WR 110 and YR 107. Maternal pedigree for 3 generations and a balanced EPD profile. • **Sells bred to calve 3/31/2025 to Pasture Sires with a heifer calf.**



BARDOLIER EBLINETTE 353

BD: 3/5/2023

Reg #: 20939373

#Mohnen Substantial 272
#Sitz Stellar 726D
SITZ Pride 200B

Centennial Focus 549
Bardolier Eblinette 14-062
Bardolier Eblinette 10-869

#Benfield Substance 8506
Mohnen Glyn Mawr Elba 1758
#Connealy Final Product
#Sitz Pride 308Y
Centennial Focus 1128
Western Lady 05-17
W C 4480 Improvement 1C09
Bardolier Eblinette 08-4113

CE	BW	WW	YW	Milk
8	-0.8	54	92	24

Dam's WR 9/102 with a 366-day calving interval. • **Sells bred to calve 4/10/2025 to Pasture Sires.**



LOT 88 • Rosemary Deb 366



ROSEMARY DEB 366

BD: 3/7/2023

Reg #: 20939379

Connealy Judgment
#KG Justified 3023
KG Miss Magic 1443

#Raven Powerball 53
Rosemary Deb 893
Rosemary Deb 002

#Connealy Consensus 7229
#Entrine of Conanga 9876
#Sitz Wisdom 481T
KG Miss Magic 3528
#PA Power Tool 9108
Raven Emma E 4241
#O C C Great Plains 943G
Rosemary Deb 818

CE	BW	WW	YW	Milk
10	-1.2	57	99	27

Big bodied and dense daughter from Pathfinder Sire, Justified going back to one of our favorite bulls of all time, OCC Great Plains. • **Sells bred to calve 3/29/2025 to Pasture Sires with a heifer calf.**



KG JUSTIFIED 3023 • Sire of Lots 88-89



BAR 69 LADY PRIDE 314

BD: 2/2/2023

Reg #: 20912459

Connealy Judgment
#KG Justified 3023
KG Miss Magic 1443

Connealy Dry Valley
Bar 69 Lady Pride 152
Sitz SLS Lady Pride 1724

#Connealy Consensus 7229
#Entrine of Conanga 9876
#Sitz Wisdom 481T
KG Miss Magic 3528
Hoover No Doubt
Becca of Conanga 1617
#Woodhill Foresight
Sitz SLS Lady Pride 2981

CE	BW	WW	YW	Milk
9	-0.3	61	108	28

Nice made Justified daughter from a Dry Valley Dam. Should be an exciting pregnancy with this mating by Easy Street. • **Sells AI bred to calve 2/17/2025 to Easy Street with a bull calf.**



LOT 89 • Bar 69 Lady Pride 314



LOT 90 • Lady Pride 387



LADY PRIDE 387

BD: 3/15/2023

Reg #: 20939388

#Poss Achievement
Sitz Accomplishment 720F
Sitz Barbamere Nell 166D

#Connealy Thunder
Bar 69 Lady Pride 990
SITZ SLS Lady Pride 1652

Poss Lasting Impact 3118
Poss Erica 327
#S A V Resource 1441
Sitz Barbamere Nell 14Y
#Baldridge Kaboom K243 KCF
#Parka of Conanga 241
#Connealy Final Product
Sitz SLS Lady Pride 3609

CE	BW	WW	YW	Milk
6	1.2	61	118	21

Huge bodied, massive-made Accomplishment daughter going back to Thunder and Final Product. One of our favorites phenotypically. • **Sells AI bred to calve 2/17/2025 to Easy Street with a bull calf.**



ELSIEMERE DEB 384

BD: 3/14/2023

Reg #: 20939387

#Poss Achievement
Sitz Accomplishment 720F
Sitz Barbamere Nell 166D

#BUBS Southern Charm AA31
Elsiemere Deb 947
Elsiemere Deb 128

Poss Lasting Impact 3118
Poss Erica 327
#S A V Resource 1441
Sitz Barbamere Nell 14Y
Silveiras Conversion 8064
Hickory Hill Erica 009
#Connealy Thunder
Elsiemere Deb 290

CE	BW	WW	YW	Milk
-1	3.5	63	114	21

Sells AI bred to calve 2/17/2025 to Easy Street with a bull calf.



ELSIEMERE DEB 394

BD: 3/18/2023

Reg #: 20939389

#Poss Achievement
Sitz Accomplishment 720F
Sitz Barbamere Nell 166D

Sitz Investment 688B
Elsiemere Deb 7716
Elsiemere Deb 343

Poss Lasting Impact 3118
Poss Erica 327
#S A V Resource 1441
Sitz Barbamere Nell 14Y
#Sitz Investment 660Z
Sitz Pride 256Z
#Sitz Upward 307R
Elsiemere Deb 650

CE	BW	WW	YW	Milk
0	3.7	71	129	22

Dam's WR 6/99 with an individual WR 102 and YR 104. Exciting mating coming with a bull by Easy Street. • **Sells AI bred to calve 2/17/2025 to Easy Street with a bull calf.**



LOT 92 • Elsiemere Deb 394



LOT 93 • Elsiemere Deb 395



ELSIEMERE DEB 395

BD: 3/18/2023

Reg #: 20948993

S A V Rainfall 6846
Pyramid Rainfall 1052
#Glacial C036 Missie 48G

Lyons Manhattan 6205
Elsiemere Deb 053
Elsiemere Deb 712

#Coleman Charlo 0256
S A V Blackcap May 4136
#Baldridge Command C036
Glacial 1441 Missie 46D
#Hoover Dam
#Lyons Eileen 3157
#Raven Powerball 53
Elsiemere Deb 546

CE	BW	WW	YW	Milk
5	1.6	72	130	29

Dam's WR 3/101 with an individual WR 99 and YR 106. Lots of performance in this pedigree and lots of numbers in this EPD package. • **Sells AI bred to calve 2/17/2025 to Easy Street with a bull calf.**



ROSEMARY DEB 380

BD: 3/12/2023

Reg #: 20948991

S A V Rainfall 6846
Pyramid Rainfall 1052
#Glacial C036 Missie 48G

#SITZ Logo 12964
Rosemary Deb 007
Rosemary Deb 841

#Coleman Charlo 0256
S A V Blackcap May 4136
#Baldridge Command C036
Glacial 1441 Missie 46D
#Sitz Tebow 11860
#SITZ Shauna 3152
#Connealy Capitalist 028
Rosemary Deb 198

CE	BW	WW	YW	Milk
10	-0.5	67	111	29

Dam's WR 3/104 with an individual WR 103. • **Sells bred to calve 3/24/2025 to Pasture Sires with a bull calf.**



LOT 95 • Rosemary Deb 388



ROSEMARY DEB 388

BD: 3/15/2023

Reg #: 20948992

S A V Rainfall 6846
Pyramid Rainfall 1052
#Glacial C036 Missie 48G

SITZ Atlas 728E
Rosemary Deb 0108
Rosemary Deb 051

#Coleman Charlo 0256
S A V Blackcap May 4136
#Baldridge Command C036
Glacial 1441 Missie 46D
Koupals B&B Atlas 4061
#Sitz Barbaramere Nell 22C
#Sitz Alliance 6595
#Rosemary Deb 906

CE	BW	WW	YW	Milk
3	2	66	113	29

These Rainfalls are big-bodied and dense-made. Dam's WR 3/99 with an individual WR 100 and YR 99. • **Sells AI bred to calve 2/18/2025 to Easy Street with a bull calf.**



LOT 96 • Bar 69 Lady Pride 377



BAR 69 LADY PRIDE 377

BD: 3/10/2023

Reg #: 20948990

S A V Rainfall 6846
Pyramid Rainfall 1052
#Glacial C036 Missie 48G

Sitz Active Duty 12156
Lady Pride 0125
Sitz SLS Lady Pride 2981

#Coleman Charlo 0256
S A V Blackcap May 4136
#Baldridge Command C036
Glacial 1441 Missie 46D
#R B Active Duty 010
Sitz Emma E 2738
#Sitz Upward 307R
Sitz SLS Lady Pride 3936

CE	BW	WW	YW	Milk
10	-0.4	64	111	34

Rainfall Granddaughter with a balanced EPD package and above average milk. Individual WR 100 and YR 99. • *Sells AI bred to calve 2/17/2025 to Easy Street.*



ELSIEMERE DEB 333

BD: 2/26/2023

Reg #: 20948977

S A V Rainfall 6846
Pyramid Rainfall 1052
#Glacial C036 Missie 48G

Lyons Manhattan 6205
Elsiemere Deb 027
Elsiemere Deb 568

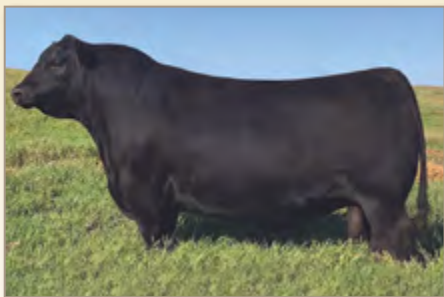
#Coleman Charlo 0256
S A V Blackcap May 4136
#Baldridge Command C036
Glacial 1441 Missie 46D
#Hoover Dam
#Lyons Eileen 3157
#Sitz Upward 307R
Elsiemere Deb 510

CE	BW	WW	YW	Milk
8	0.6	60	109	29

One of the top phenotypic heifers with a nice balanced EPD package. Dam's WR 3/98. • *Sells AI bred to calve 3/12/2025 to Easy Street with a heifer calf.*



LOT 97 • Elsiemere Deb 333



SAV AMERICA 8018 • Sire of Lots 98-99



S A V ELBA 5355 • Dam of Lots 98-99



LOT 98 • S A V Elba 3577



S A V ELBA 3577

BD: 12/19/2022

Reg #: 20740218

#S A V President 6847

S A V America 8018

S A V Madame Pride 0075

#S A V 004 Density 4336

#S A V Elba 5355

S A V Elba 1400

#Coleman Charlo 0256

S A V Blackcap May 4136

#S A F 598 Bando 5175

S A V Madame Pride 8264

#S A V 8180 Traveler 004

S A V May 7238

Rito 707 of Ideal 3407 7075

S A V Elba 1094

CE	BW	WW	YW	Milk
1	3.8	67	113	25

Pathfinder dam's WR 8/100 with a 367-day calving interval. Two beautiful America daughters from a Pathfinder dam by Density and from a productive Rito 7075 Granddam back to the famous Elba 1094.
• **Sells AI bred to calve 2/18/2025 to Easy Street with a heifer calf.**



S A V ELBA 3578

BD: 12/26/2022

Reg #: 20740222

#S A V President 6847

S A V America 8018

S A V Madame Pride 0075

#S A V 004 Density 4336

#S A V Elba 5355

S A V Elba 1400

#Coleman Charlo 0256

S A V Blackcap May 4136

#S A F 598 Bando 5175

S A V Madame Pride 8264

#S A V 8180 Traveler 004

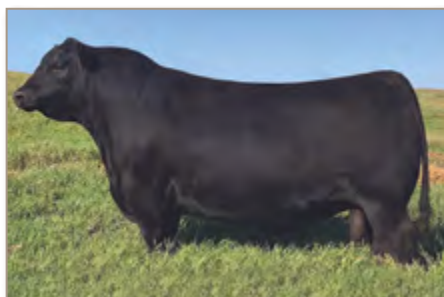
S A V May 7238

Rito 707 of Ideal 3407 7075

S A V Elba 1094

CE	BW	WW	YW	Milk
1	3.8	67	113	25

Pathfinder dam's WR 8/100 with a 367-day calving interval. Two beautiful America daughters from a Pathfinder dam by Density and from a productive Rito 7075 Granddam back to the famous Elba 1094.
• **Sells bred to calve 4/10/2025 to Pasture Sires.**



SAV AMERICA 8018 • Sire of Lot 99



S A V ELBA 1094 • Great Granddam of Lot 99



LOT 99 • S A V Elba 3578



BLACKCAP REVOLUTION • Grandsire of Lots 100-102



BASIN RAINMAKER 4404 • Sire of Lots 100-102



LOT 100 • S R Bonnie Belle 384



S R BONNIE BELLE 384

BD: 3/13/2023

Reg #: 20842643

Basin Rainmaker 2704

#Basin Rainmaker 4404

Basin Joy 1036

#Tehama Blackcap Revolution

S R Bonnie Belle 1111

S R Bonnie Belle 408

#Basin Rainmaker P175

#Basin Erica 7520 BV

#Basin Payweight 107S

Basin Joy 566T

#Tehama 717 Band 876

#Tehama Blackcap E406

#S A V Resource 1441

#S R Bonnie Belle 104

CE	BW	WW	YW	Milk
2	3.2	69	118	28

Dam's WR 1/110 with an individual WR 110. Beautiful female by the Pathfinder sire, Rainmaker 4404. Going back to a daughter of our Bonnie Belle 408 donor cow who had a production WR 4/101 and YR 2/102. • *Sells AI bred to calve 3/11/2025 to LT Firesteel with a heifer calf.*



S R BONNIE BELLE 408 • Maternal Granddam of Lots 100-102



S R BONNIE BELLE 3198

BD: 4/6/2023

Reg #: 20842669

Basin Rainmaker 2704

#Basin Rainmaker 4404

Basin Joy 1036

#Tehama Blackcap Revolution

S R Bonnie Belle 0114

S R Bonnie Belle 408

#Basin Rainmaker P175

#Basin Erica 7520 BV

#Basin Payweight 107S

Basin Joy 566T

#Tehama 717 Band 876

#Tehama Blackcap E406

#S A V Resource 1441

#S R Bonnie Belle 104

CE	BW	WW	YW	Milk
6	1.7	59	104	26

Sells AI bred to calve 3/11/2025 to Easy Street with a bull calf.



S R BONNIE BELLE 3174

BD: 3/30/2023

Reg #: 20842661

Basin Rainmaker 2704

#Basin Rainmaker 4404

Basin Joy 1036

#Tehama Blackcap Revolution

S R Bonnie Belle 092

S R Bonnie Belle 408

#Basin Rainmaker P175

#Basin Erica 7520 BV

#Basin Payweight 107S

Basin Joy 566T

#Tehama 717 Band 876

#Tehama Blackcap E406

#S A V Resource 1441

#S R Bonnie Belle 104

CE	BW	WW	YW	Milk
2	3.2	60	106	26

Sells AI bred to calve 3/11/2025 to LT Firesteel with a heifer calf.



LOT 103 • S R Donna 3143



COLEMAN DONNA 186 • Dam of Lots 103-106



S R DONNA 3143

BD: 3/20/2023

Reg #: 20848279

#Tehama 717 Band 876
#**Tehama Blackcap Revolution**
#Tehama Blackcap E406

N Bar Shadow X4124
Coleman Donna 186
Coleman Donna 975

Tehama Band 717
#Tehama Echo B287
#Paramont Ambush 2172
Blackcap of Tehama C161
#N Bar Emulation EXT
#N Bar Enchantress 4908
#R R Rito 707
Coleman Donna 386

CE	BW	WW	YW	Milk
-1	3.3	59	92	24

ET • Sells AI bred to calve 3/11/2025 to Easy Street with a heifer calf.



COLEMAN DONNA 975 • Granddam of Lots 103-106



COLEMAN DONNA 386 • Great Granddam of Lots 103-106

104

S R DONNA 3150

BD: 3/21/2023

Reg #: 20848282

#Tehama 717 Band 876
#Tehama **Blackcap Revolution**
#Tehama Blackcap E406

N Bar Shadow X4124
Coleman Donna 186
Coleman Donna 975

Tehama Band 717
#Tehama Echo B287
#Paramont Ambush 2172
Blackcap of Tehama C161
#N Bar Emulation EXT
#N Bar Enchantress 4908
#R R Rito 707
Coleman Donna 386

CE	BW	WW	YW	Milk
-1	3.3	59	92	24

ET • Sells AI bred to calve 3/11/2025 to Easy Street with a heifer calf.



LOT 104 • S R Donna 3150

105

S R DONNA 3157

BD: 3/24/2023

Reg #: 20848284

#Tehama 717 Band 876
#Tehama **Blackcap Revolution**
#Tehama Blackcap E406

N Bar Shadow X4124
Coleman Donna 186
Coleman Donna 975

Tehama Band 717
#Tehama Echo B287
#Paramont Ambush 2172
Blackcap of Tehama C161
#N Bar Emulation EXT
#N Bar Enchantress 4908
#R R Rito 707
Coleman Donna 386

CE	BW	WW	YW	Milk
-1	3.3	59	92	24

ET • Sells AI bred to calve 3/11/2025 to Easy Street with a bull calf.



BLACKCAP REVOLUTION • Sire of Lots 103-106

106

S R DONNA 3139

BD: 3/19/2023

Reg #: 20848278

#Tehama 717 Band 876
#Tehama **Blackcap Revolution**
#Tehama Blackcap E406

N Bar Shadow X4124
Coleman Donna 186
Coleman Donna 975

Tehama Band 717
#Tehama Echo B287
#Paramont Ambush 2172
Blackcap of Tehama C161
#N Bar Emulation EXT
#N Bar Enchantress 4908
#R R Rito 707
Coleman Donna 386

CE	BW	WW	YW	Milk
-1	3.3	59	92	24

Dam's WR 4/103. Beautiful set of flush sisters with an old-time pedigree. Donna 186 was our choice of Shadow daughters to flush when we were searching for the best living Shadow daughters in the breed. • Sells AI bred to calve 4/3/2025 to Easy Street with a bull calf.





LOT 107 - S R Beauty 308



S R BEAUTY 308

BD: 3/3/2023

Reg #: 20842631

#Mohnen Substantial 272
#Sitz Stellar 726D
SITZ Pride 200B
O C C Honesty 962H
S R Beauty 113
S R Beauty 827

#Benfield Substance 8506
Mohnen Glyn Mawr Elba 1758
#Connealy Final Product
#Sitz Pride 308Y
#O C C Anchor 771A
O C C Dixie Erica 907C
#Sinclair Emulation XXP
S R Beauty 430

CE	BW	WW	YW	Milk
4	0.7	64	114	18

Stellar daughter from the Beauty cow family. Individual WR 110. • **Sells AI bred to calve 3/10/2025 to LT Firesteel with a heifer calf.**



S R SKY TEE LASS 373

BD: 3/12/2023

Reg #: 20845402

#Mohnen Substantial 272
#Sitz Stellar 726D
SITZ Pride 200B
S A V Rainfall 6846
S R Sky Tee Lass 103
S R Sky Tee Lass 714

#Benfield Substance 8506
Mohnen Glyn Mawr Elba 1758
#Connealy Final Product
#Sitz Pride 308Y
#Coleman Charlo 0256
S A V Blackcap May 4136
#Soo Line Motive 9016
S R Sky Tee Lass 548

CE	BW	WW	YW	Milk
9	-1.6	52	99	17

Many foundation female makers throughout this pedigree. • **Sells AI bred to calve 3/11/2025 to LT Firesteel with a heifer calf.**



S R DIXIE ERICA 326

BD: 3/7/2023

Reg #: Not Registered

Mohnen Substantial 272
Sitz Stellar 726D
SITZ Pride 200B
S A V Estocolmo 8331
S R Dixie Erica 178
S R Dixie Erica 8155

Benfield Substance 8506
Mohnen Glyn Mawr Elba 1758
Connealy Final Product
Sitz Pride 308Y
Coleman Charlo 0256
S A V Blackcap May 3501
S A V Hesston 2217
Coleman Dixie Erica 8271

CE	BW	WW	YW	Milk

Unfortunately, this heifer is not registered but one of the top individuals in the offering. Her mother is one of the best SAV Estocolomo daughters we have in our herd. • **Sells bred to calve 4/21/2025 to Pasture Sires.**



S R BLACKCAP MAY 3212

BD: 4/24/2023

Reg #: 20842673

S A V Rainfall 6846
S R Silverado 083
#S R Dorothy Ideal 604
#Sinclair Emulation XXP
S A V Blackcap May 0502
S A V Blackcap May 6644

#Coleman Charlo 0256
S A V Blackcap May 4136
#Connealy Capitalist 028
S R Dorothy Ideal 471
#N Bar Emulation EXT
#N Bar Primrose Y3051
#Coleman Charlo 0256
S A V Blackcap May 4136

CE	BW	WW	YW	Milk
2	3	67	125	25

Dam's WR 2/105 with an individual WR 103. Nice made Silverado female from an XXP daughter to Blackcap May 6644, the full sister to President, Rainfall, Raindance, Governor, and others. • **Sells bred to calve 4/11/2025 to Easy Street with a bull calf.**



S R LADY BLUE 325

BD: 3/7/2023

Reg #: 20842634

#Mohnen Substantial 272
#Sitz Stellar 726D
SITZ Pride 200B
O C C Wholesome 667W
S R Lady Blue 198
S R Lady Blue 831

#Benfield Substance 8506
Mohnen Glyn Mawr Elba 1758
#Connealy Final Product
#Sitz Pride 308Y
O C C Practical 841P
O C C Juanada 664R
#Sitz 4 Aces 4551
S R Lady Blue 118

CE	BW	WW	YW	Milk
1	0.8	64	110	20

Dam's WR 1/111 from our proven Lady Blue cow family and the Pathfinder Sire, Sitz Stellar. Individual WR 111. • **Sells AI bred to calve 3/11/2025 to LT Firesteel with a bull calf.**



LOT 110 - S R Dixie Erica 326



S R LUCY 3156

BD: 3/24/2023

Reg #: 20842655

S A V Rainfall 6846
S R Silverado 083
#S R Dorothy Ideal 604
#Bruin Torque 5261
S R Lucy 059
S R Lucy 7165

#Coleman Charlo 0256
S A V Blackcap May 4136
#Connealy Capitalist 028
S R Dorothy Ideal 471
#S A V 004 Density 4336
Falcon Blackbird 6071
#S A V Resource 1441
S R Lucy 346

CE	BW	WW	YW	Milk
10	0.3	54	105	20

Sells AI bred to calve 3/11/2025 to OCC Great Plains with a bull calf.



S R RACHEL 703 - Pathfinder Dam of Lot 113



REICH RACHEL 588 - Maternal Granddam of Lot 113



S R RACHEL 3178

BD: 4/1/2023

Reg #: 20842663

Basin Rainmaker 2704
#Basin Rainmaker 4404
Basin Joy 1036

#Connealy Reflection
#S R Rachel 703
Reich Rachel 588

#Basin Rainmaker P175
#Basin Erica 7520 BV
#Basin Payweight 107S
Basin Joy 566T
#Bon View New Design 878
Happy Grill of Conanga 6260
#S A V Resource 1441
#Reich Eota Lass 798

CE	BW	WW	YW	Milk
1	2.7	63	113	29

Dam's WR 5/106. Granddam WR 6/104. Pathfinder Dam and Great Granddam with a 371-day calving interval. • **Sells AI bred to calve 3/11/2025 to Easy Street with a heifer calf.**



S R BONNIE BELLE 408 - Maternal Granddam of Lot 114



S R BONNIE BELLE 391

BD: 3/13/2023

Reg #: 20842645

Basin Rainmaker 2704
#Basin Rainmaker 4404
Basin Joy 1036

#Tehama Blackcap Revolution
#S R Bonnie Belle 057
S R Bonnie Belle 408

#Basin Rainmaker P175
#Basin Erica 7520 BV
#Basin Payweight 107S
Basin Joy 566T
#Tehama 717 Band 876
#Tehama Blackcap E406
#S A V Resource 1441
#S R Bonnie Belle 104

CE	BW	WW	YW	Milk
-1	4.2	69	118	29

Dam's WR 2/110 with a 366-day calving interval. Individual WR 104 sired by Pathfinder sire, Rainmaker 4404 going back to our donor cow, Bonnie Belle 408 by a daughter of Pathfinder Sire, Blackcap Revolution. Pedigree loaded with Pathfinders. • **Sells bred to calve 4/11/2025 to Pasture Sires with a bull calf.**



LOT 114 - S R Bonnie Belle 391





LOT 115 • S R Bonnie Belle 358



S R BONNIE BELLE 358

BD: 3/10/2023

Reg #: 20843734

S A V America 8018
S A V Glory Days 1832
 #S A V Madame Pride 3145

#Sinclair Emulation XXP
S R Bonnie Belle 8100
 #S R Bonnie Belle 104

#S A V President 6847
 S A V Madame Pride 0075
 #S A V Priority 7283
 S A V Madame Pride 1171
 #N Bar Emulation EXT
 #N Bar Primrose Y3051
 #O C C Paxton 730P
 #S R Bonnie Belle 980

CE	BW	WW	YW	Milk
4	2.5	68	121	22

Dam's WR 4/104 with a 351-day calving interval. Pathfinder Granddam and Great Granddam. We're excited about the Glory Day females. Individual WR 102. Proven maternal and performance. • **Sells bred to calve 4/14/2025 to Easy Street with a heifer calf.**



S R BONNIE BELLE 8100 • Dam of Lot 115



S A V BLACKCAP MAY 3321

BD: 3/11/2023

Reg #: 20629739

#Mead Magnitude
S A V Magnum 1335
 S A V Emblynnette 9023

Rito 707 of Ideal 3407 7075
S A V Blackcap May 3501
 S A V Blackcap May 4136

#K C F Bennett Southside
 #Mead Primrose N198
 #LD Capitalist 316
 S A V Emblynnette 7505
 #R R Rito 707
 Ideal 3407 of 1418 076
 #S A V 8180 Traveler 004
 #S A V May 2397

CE	BW	WW	YW	Milk
8	0.5	78	142	29

Dam's WR 8/105 with a 364-day calving interval. • **Sells bred to calve 3/26/2025 to Pasture Sires with a heifer calf.**



S A V BLACKCAP MAY 3501 • Dam of Lot 116



SAV GLORY DAYS 1832 • Sire of Lots 115 and 118



SAV BLACKCAP MAY 4500 • Dam of Lot 118



S R DOROTHY IDEAL 3111

BD: 3/15/2023

Reg #: 20842650

Basin Rainmaker 2704
#Basin Rainmaker 4404
Basin Joy 1036

#Tehama Blackcap Revolution
S R Dorothy Ideal 176
S R Dorothy Ideal 6112

#Basin Rainmaker P175
#Basin Erica 7520 BV
#Basin Payweight 107S
Basin Joy 566T
#Tehama 717 Band 876
#Tehama Blackcap E406
#S A V Resource 1441
S R Dorothy 968

CE	BW	WW	YW	Milk
2	3.1	70	120	29

Individual WR 111. Granddam progeny WR 5/107. • **Sells AI bred to calve 3/12/2025 to Easy Street with a heifer calf.**



S A V BLACKCAP MAY 3078

BD: 2/20/2023

Reg #: 20625818

S A V America 8018
S A V Glory Days 1832
#S A V Madame Pride 3145

Rito 707 of Ideal 3407 707S
S A V Blackcap May 4500
S A V Blackcap May 4136

#S A V President 6847
S A V Madame Pride 0075
#S A V Priority 7283
S A V Madame Pride 1171
#R R Rito 707
Ideal 3407 of 1418 076
#S A V 8180 Traveler 004
#S A V May 2397

CE	BW	WW	YW	Milk
1	3.2	63	112	21

From the Blackcap May cow family, a direct Granddaughter of 4136 and 3145. • **Sells bred to calve 3/24/2025 to Pasture Sires with a bull calf.**



S R PRIDE 3109

BD: 3/14/2023

Reg #: 20842649

S A V Territory 7225
S A V Landmark 9148
S A V Blackcap May 1420

#H A Power Alliance 1025
S R Pride 0131
Sitz Pride 2188

#S A V Resource 1441
S A V Emblynette 3293
Rito 707 of Ideal 3407 707S
S A V Blackcap May 4136
#Sitz Alliance 6595
H A Rito Lady 4167
#N Bar Emulation EXT
#Sitz Pride 838

CE	BW	WW	YW	Milk
-2	4	64	112	15

Long bodied Landmark daughter from the Sitz Pride cow family. Great Granddam is a Pathfinder. Exciting mating with a heifer calf coming by OCC Great Plains. • **Sells AI bred to calve 3/28/2025 to OCC Great Plains with a heifer calf.**





LOT 120 • S R Lady Blue 3521



S R LADY BLUE 3521

BD: 3/20/2023

Reg #: 20842719

#Tehama 717 Band 876
#**Tehama Blackcap Revolution**
#Tehama Blackcap E406

#O C C Paxton 730P
S R Lady Blue 118
#S R Lady Blue 631

Tehama Band 717
#Tehama Echo B287
#Paramont Ambush 2172
Blackcap of Tehama C161
O C C Focus 813F
O C C Blackbird 736K
Oak Hollow 7709 of 1318 1118
Farview Lady Blue 2228

CE	BW	WW	YW	Milk
2	2.6	63	95	25

Lots 120-126 make a unique group of flush sisters. Dam's WR 5/115. Pathfinder Granddam WR 7/106. Here's a group of flush sisters by Pathfinder sire, Blackcap Revolution. Their productive dam by OCC Paxton has 66 progeny recorded at AAA. Buy in confidence as these females will move your program forward for maternal production. • *Lot 120 sells AI bred to calve 4/3/2025 to Easy Street with a bull calf.*



S R LADY BLUE 118 • Dam of Lots 120-126



S R LADY BLUE 3519

BD: 3/20/2023

Reg #: 20842718

#Tehama 717 Band 876
#**Tehama Blackcap Revolution**
#Tehama Blackcap E406

#O C C Paxton 730P
S R Lady Blue 118
#S R Lady Blue 631

Tehama Band 717
#Tehama Echo B287
#Paramont Ambush 2172
Blackcap of Tehama C161
O C C Focus 813F
O C C Blackbird 736K
Oak Hollow 7709 of 1318 1118
Farview Lady Blue 2228

CE	BW	WW	YW	Milk
2	2.6	63	95	25

Sells AI bred to calve 3/11/2025 to Easy Street with a heifer calf.



S R LADY BLUE 943
Maternal Sister to
Lots 120-126



S R LADY BLUE 3503

BD: 3/13/2023

Reg #: 20842713

#Tehama 717 Band 876
#**Tehama Blackcap Revolution**
#Tehama Blackcap E406

#O C C Paxton 730P
S R Lady Blue 118
#S R Lady Blue 631

Tehama Band 717
#Tehama Echo B287
#Paramont Ambush 2172
Blackcap of Tehama C161
O C C Focus 813F
O C C Blackbird 736K
Oak Hollow 7709 of 1318 1118
Farview Lady Blue 2228

CE	BW	WW	YW	Milk
2	2.6	63	95	25

Sells AI bred to calve 3/11/2025 to Easy Street with a heifer calf.



**S R LADY BLUE 963 AND
HER 2024 SON**
Maternal Sister to
Lots 120-126

123

S R LADY BLUE 3506

BD: 3/15/2023

Reg #: 20842717

#Tehama 717 Band 876
#Tehama Blackcap Revolution
#Tehama Blackcap E406

#O C C Paxton 730P
S R Lady Blue 118
#S R Lady Blue 631

Tehama Band 717
#Tehama Echo B287
#Paramont Ambush 2172
Blackcap of Tehama C161
O C C Focus 813F
O C C Blackbird 736K
Oak Hollow 7709 of 1318 1118
Farview Lady Blue 2228

CE	BW	WW	YW	Milk
2	2.6	63	95	25

Sells AI bred to calve 3/11/2025 to Easy Street with a bull calf.



LOT 123 - S R Lady Blue 3506

124

S R LADY BLUE 3515

BD: 3/18/2023

Reg #: 20842716

#Tehama 717 Band 876
#Tehama Blackcap Revolution
#Tehama Blackcap E406

#O C C Paxton 730P
S R Lady Blue 118
#S R Lady Blue 631

Tehama Band 717
#Tehama Echo B287
#Paramont Ambush 2172
Blackcap of Tehama C161
O C C Focus 813F
O C C Blackbird 736K
Oak Hollow 7709 of 1318 1118
Farview Lady Blue 2228

CE	BW	WW	YW	Milk
2	2.6	63	95	25

Sells AI bred to calve 3/11/2025 to Easy Street with a bull calf.



S R LADY BLUE 585 - Maternal Sister to Lots 120-126

125

S R LADY BLUE 3537

BD: 3/23/2023

Reg #: 20842714

#Tehama 717 Band 876
#Tehama Blackcap Revolution
#Tehama Blackcap E406

#O C C Paxton 730P
S R Lady Blue 118
#S R Lady Blue 631

Tehama Band 717
#Tehama Echo B287
#Paramont Ambush 2172
Blackcap of Tehama C161
O C C Focus 813F
O C C Blackbird 736K
Oak Hollow 7709 of 1318 1118
Farview Lady Blue 2228

CE	BW	WW	YW	Milk
2	2.6	63	95	25

Sells AI bred to calve 3/11/2025 to Easy Street with a heifer calf.

126

S R LADY BLUE 3509

BD: 3/27/2023

Reg #: 20842708

#Tehama 717 Band 876
#Tehama Blackcap Revolution
#Tehama Blackcap E406

#O C C Paxton 730P
S R Lady Blue 118
#S R Lady Blue 631

Tehama Band 717
#Tehama Echo B287
#Paramont Ambush 2172
Blackcap of Tehama C161
O C C Focus 813F
O C C Blackbird 736K
Oak Hollow 7709 of 1318 1118
Farview Lady Blue 2228

CE	BW	WW	YW	Milk
2	2.6	63	95	25

Sells AI bred to calve 3/11/2025 to Easy Street with a heifer calf.



BLACKCAP REVOLUTION - Sire of Lots 120-126



LOT 127 - Elsiemere Deb 3101



ELSIEMERE DEB 3101

BD: 3/24/2023

Reg #: 20939357

Connealy National 390C
SITZ National 612J
SITZ Emma E 113F

#GDAR Game Day 449
Elsiemere Deb 458
Elsiemere Deb 803

#Deer Valley Patriot 3222
Elza of Conanga 390C
#Sitz Asset 402C
Sitz Emma E 32B
#Boyd New Day 8005
#G D A R Miss Wix 474
#Sitz Upward 307R
Elsiemere Deb 669

CE	BW	WW	YW	Milk
9	0.6	61	106	23

Individual WR 99 and YR 100. Absolutely gorgeous female by Sitz National. • **Sells AI bred to calve 2/17/2025 to Easy Street with a bull calf.**



ELSIEMERE DEB 315

BD: 2/12/2023

Reg #: 20939370

Connealy National 390C
SITZ National 612J
SITZ Emma E 113F

Sitz Conquest 11316
Elsiemere Deb 158
Elsiemere deb 220

#Deer Valley Patriot 3222
Elza of Conanga 390C
#Sitz Asset 402C
Sitz Emma E 32B
#Connealy Conquest
Sitz Eisa Evergreen 5144
#Sitz Dash 10277
Elsiemere Deb 817

CE	BW	WW	YW	Milk
11	0.1	65	106	26

Dam's WR 2/102. • **Sells AI bred to calve 2/17/2025 to Easy Street with a heifer calf.**



LOT 129 - Elsiemere Deb 374



ELSIEMERE DEB 374

BD: 3/8/2023

Reg #: 20939383

#Mohnen Substantial 272
#Sitz Stellar 726D
SITZ Pride 200B

#Connealy Black Granite
Elsiemere Deb 728
Elsiemere Deb 403

#Benfield Substance 8506
Mohnen Glyn Mawr Elba 1758
#Connealy Final Product
#Sitz Pride 308Y
#Connealy Consensus 7229
#Eura Elga of Conanga 9109
#Sitz Identity 2575
Elsiemere Deb 202

CE	BW	WW	YW	Milk
10	-0.9	69	120	21

Another Stellar daughter with individual WR 103 and YR 101. • **Sells bred to calve 4/23/2025 to Pasture Sires.**



ELSIEMERE DEB 3117

BD: 4/10/2023

Reg #: 20939366

#Raven Powerball 53
Sitz Powerball 704D
Sitz Henrietta Pride 307U

#Connealy Thunder
Elsiemere Deb 525
Elsiemere Deb 227

#PA Power Tool 9108
Raven Emma E 4241
#Boyd New Day 8005
Sitz Henrietta Pride 81M
#Baldridge Kaboom K243 KCF
#Parka of Conanga 241
#S A V Final Answer 0035
#Elsiemere Deb 727

CE	BW	WW	YW	Milk
11	0.1	64	113	27

Dam's WR 6/104 with individual WR 104. One of our favorite Powerball daughters with Pathfinder sires of Thunder and Final Answer in the pedigree. Pathfinder Great Granddam. • **Sells bred to calve 3/24/2025 to Pasture Sires with a heifer calf.**



LOT 130 • Elsiemere Deb 3117



ROSEMARY DEB 3108

BD: 3/28/2023

Reg #: 20939361

#Raven Powerball 53
Sitz Powerball 704D
Sitz Henrietta Pride 307U

Sitz Conquest 11316
Rosemary Deb 9900
Rosemary Deb 901

#PA Power Tool 9108
Raven Emma E 4241
#Boyd New Day 8005
Sitz Henrietta Pride 81M
#Connealy Conquest
Sitz Eisa Evergreen 5144
#Sitz Upward 307R
Rosemary Deb 709

CE	BW	WW	YW	Milk
9	0.7	56	95	30

Dam's WR 4/101 with a 370-day calving interval. Powerball and Upward with a little more milk. • **Sells AI bred to calve 2/17/2025 to Easy Street with a bull calf.**



RAVEN POWERBALL S3 • Paternal Grandsire of Lots 130-135



BAR 69 LADY PRIDE 3114

BD: 4/7/2023

Reg #: 20939364

#Raven Powerball 53
Sitz Powerball 704D
Sitz Henrietta Pride 307U

#Connealy Thunder
Bar 69 Lady Pride 928
Sitz SLS Lady Pride 1724

#PA Power Tool 9108
Raven Emma E 4241
#Boyd New Day 8005
Sitz Henrietta Pride 81M
#Baldridge Kaboom K243 KCF
#Parka of Conanga 241
#Woodhill Foresight
Sitz SLS Lady Pride 2981

CE	BW	WW	YW	Milk
3	3.1	61	108	27

Dam's WR 4/102 and individual WR 100. • **Sells AI bred to calve 2/17/2025 to Easy Street with a bull calf.**



ELSIEMERE DEB 3122

BD: 4/20/2023

Reg #: 20939368

#Raven Powerball 53
Sitz Powerball 704D
Sitz Henrietta Pride 307U

#Sitz Upward 307R
Elsiemere Deb 568
Elsiemere Deb 510

#PA Power Tool 9108
Raven Emma E 4241
#Boyd New Day 8005
Sitz Henrietta Pride 81M
#Connealy Onward
Sitz Henrietta Pride 81M
BAR 69 Forefront M23
#Elsiemere Deb 3208

CE	BW	WW	YW	Milk
4	2.9	67	118	29

Dam's WR 8/102 with a 368-day calving interval. Individual WR 115. • **Sells AI bred to calve 2/17/2025 to Easy Street with a bull calf.**



BAR 69 LADY PRIDE 356

BD: 3/5/2023

Reg #: 20939375

#Raven Powerball 53
Sitz Powerball 704D
Sitz Henrietta Pride 307U

#Connealy Thunder
Bar 69 Lady Pride 607
Sitz SLS Lady Pride 1724

#PA Power Tool 9108
Raven Emma E 4241
#Boyd New Day 8005
Sitz Henrietta Pride 81M
#Baldridge Kaboom K243 KCF
#Parka of Conanga 241
#Woodhill Foresight
Sitz SLS Lady Pride 2981

CE	BW	WW	YW	Milk
6	2.2	59	108	27

Multi-generation maternal and performance. • **Sells AI bred to calve 2/17/2025 to Easy Street with a bull calf.**



ROSEMARY DEB 3118

BD: 4/15/2023

Reg #: 20939367

#Raven Powerball 53
Sitz Powerball 704D
Sitz Henrietta Pride 307U

#Sitz Investment 660Z
Rosemary Deb 635
#Rosemary Deb 108

#PA Power Tool 9108
Raven Emma E 4241
#Boyd New Day 8005
Sitz Henrietta Pride 81M
#Connealy Final Product
#Sitz Ellunas Elite 656T
#G D A R Traveler 71
Rosemary Deb 926

CE	BW	WW	YW	Milk
6	2.3	66	121	31

Dam's WR 7/100 with a 368-day calving interval. Individual WR 104. • **Sells bred to calve 3/27/2025 to Pasture Sires with a bull calf.**



LOT 136 • Rosemary Deb 3109



ROSEMARY DEB 3109

BD: 3/29/2023

Reg #: 20939362

#Poss Achievement
Sitz Achievement 11699
Sitz Emma E 977

#Connealy Confidence 0100
Rosemary Deb 776
#Rosemary Deb 110

Poss Lasting Impact 3118
Poss Erica 327
#SITZ Logo 12964
Sitz Emma E 815
Connealy Tobin
Becka Gala of Conanga 8281
#Sitz Dash 10277
Rosemary Deb 907

CE	BW	WW	YW	Milk
8	0.9	64	112	28

Dam's WR 6/99. Individual WR 103 and YR 105. Granddam is a Pathfinder. • **Sells AI bred to calve 3/9/2025 to Easy Street with a bull calf.**



ROSEMARY DEB 3106

BD: 3/26/2023

Reg #: 20939360

#KG Justified 3023
KG Justified 1034
KG Kem 9783

Sitz Investment 688B
Rosemary Deb 7704
Rosemary Deb 957

Connealy Judgment
KG Miss Magic 1443
#KG Resolution 4042
KG Kem 9058
#Sitz Investment 660Z
Sitz Pride 256Z
#Connealy Thunder
Rosemary Deb 613

CE	BW	WW	YW	Milk
8	-0.1	60	107	28

Sells AI bred to calve 3/9/2025 to Easy Street with a heifer calf.



ELSIEMERE DEB 3116

BD: 4/9/2023

Reg #: 20939365

#Poss Achievement
Sitz Achievement 11699
Sitz Emma E 977

Sitz Powerball 704D
Elsiemere Deb 036
Elsiemere Deb 400

Poss Lasting Impact 3118
Poss Erica 327
#SITZ Logo 12964
Sitz Emma E 815
#Raven Powerball 53
Sitz Henrietta Pride 307U
#Sitz Dash 10277
Elsiemere Deb 229

CE	BW	WW	YW	Milk
6	1.2	69	120	30

Dam's WR 3/105 with individual WR 105. • **Sells AI bred to calve 2/17/2025 to Easy Street with a bull calf.**



ROSEMARY DEB 3105

BD: 3/26/2023

Reg #: 20939359

#Poss Achievement
Sitz Achievement 11699
Sitz Emma E 977

#SITZ Logo 12964
Rosemary Deb 964
Rosemary Deb 273

Poss Lasting Impact 3118
Poss Erica 327
#SITZ Logo 12964
Sitz Emma E 815
#Sitz Tebow 11860
#SITZ Shauna 3152
#Sitz Upward 307R
Rosemary Deb 937

CE	BW	WW	YW	Milk
6	0.7	66	114	28

Dam's 4/104 with a 365-day calving interval. Achievement daughter with a balanced EPD package. • **Sells AI bred to calve 2/17/2025 to Easy Street with a heifer calf.**



ELSIEMERE DEB 399

BD: 3/21/2023

Reg #: 20939390

#Poss Achievement
Sitz Achievement 11699
Sitz Emma E 977

#Soo Line Motive 9016
Elsiemere Deb 806
Elsiemere Deb 608

Poss Lasting Impact 3118
Poss Erica 327
#SITZ Logo 12964
Sitz Emma E 815
HF Kodiak 5R
TLA Beauty 5R
#Sitz Investment 660Z
Elsiemere Deb 416

CE	BW	WW	YW	Milk
8	-0.9	59	102	28

Sells bred to calve 4/13/2025 to Pasture Sires.



ELSIEMERE DEB 3103

BD: 3/24/2023

Reg #: 20939358

#Poss Achievement
Sitz Achievement 11699
Sitz Emma E 977

#Raven Powerball 53
Elsiemere Deb 792
Elsiemere Deb 436

Poss Lasting Impact 3118
Poss Erica 327
#SITZ Logo 12964
Sitz Emma E 815
#PA Power Tool 9108
Raven Emma E 4241
#Hoover Dam
#Elsiemere Deb 723

CE	BW	WW	YW	Milk
8	0.4	70	130	27

Individual WR 104 and YR 108. • **Sells bred to calve 4/10/2025 to Pasture Sires.**





LOT 142 • Elsiemere Deb 3111



ELSIEMERE DEB 3111

BD: 3/31/2023

Reg #: 20939363

#Poss Achievement
Sitz Achievement 11699
Sitz Emma E 977

#Sitz Stellar 726D
Elsiemere Deb 001
Elsiemere Deb 825

Poss Lasting Impact 3118
Poss Erica 327
#SITZ Logo 12964
Sitz Emma E 815
#Mohnen Substantial 272
SITZ Pride 200B
Sitz Final Statement 6244
Elsiemere Deb 696

CE	BW	WW	YW	Milk
11	-1.1	68	123	27

Individual WR 101 and YR 105 • *Sells AI bred to calve 2/17/2025 to Easy Street with a bull calf.*



ROSEMARY DEB 383

BD: 3/13/2023

Reg #: 20939386

#Poss Achievement
Sitz Accomplishment 720F
Sitz Barbaramere Nell 166D

#Raven Powerball 53
Rosemary Deb 883
Rosemary Deb 158

Poss Lasting Impact 3118
Poss Erica 327
#S A V Resource 1441
Sitz Barbaramere Nell 14Y
#PA Power Tool 9108
Raven Emma E 4241
#Sitz Upward 307R
Rosemary Deb 260

CE	BW	WW	YW	Milk
9	-0.6	62	112	23

Dam's WR 5/100 • *Sells bred to calve 4/8/2025 to Pasture Sires.*



LADY PRIDE 358

BD: 3/6/2023

Reg #: 20939376

#Poss Achievement
Sitz Accomplishment 720F
Sitz Barbaramere Nell 166D

#Soo Line Motive 9016
Lady Pride 864
#SITZ SLS Lady Pride 1371

Poss Lasting Impact 3118
Poss Erica 327
#S A V Resource 1441
Sitz Barbaramere Nell 14Y
HF Kodiak 5R
TLA Beauty 5R
#Sitz Upward 307R
Sitz SLS Lady Pride 3609

CE	BW	WW	YW	Milk
0	3.1	62	117	22

Dam's WR 3/110 with a 367-day calving interval. • *Sells bred to calve 4/13/2025 to Pasture Sires.*



LOT 144 • Lady Pride 358



LOT 145 • S R Dorothy Ideal 239



S R DOROTHY IDEAL 239

BD: 3/8/2022

Reg #: 20536947

#Mohnen Substantial 272
#Sitz Stellar 726D
SITZ Pride 200B

#Connealy Capitalist 028
#S R Dorothy Ideal 604
S R Dorothy Ideal 471

#Benfield Substance 8506
Mohnen Glyn Mawr Elba 1758
#Connealy Final Product
#Sitz Pride 308Y
#S A V Final Answer 0035
Prides Pita of Conanga 8821
Ox Bow Revival 1313
S R Dorothy Ideal 250

CE	BW	WW	YW	Milk
10	-0.8	66	117	20

Pathfinder Dam WR 6/106 with a 370-day calving interval. Here's a maternal sister to the Genex herd sire, S R Silverado 083. A real opportunity from proven genetics with a potential herd sire coming by Baldrige Badger. • **Sells AI bred to calve 3/9/2025 to Baldrige Badger with a bull calf.**



S R SILVERADO 083 • Maternal brother to Lot 145



S R DOROTHY IDEAL 604 • Dam of Lot 145



S R DOROTHY IDEAL 2163

BD: 3/24/2022

Reg #: 20536574

#Mohnen Substantial 272
#Sitz Stellar 726D
SITZ Pride 200B

S A V Rainfall 6846
S R Dorothy Ideal 0112
S R Dorothy Ideal 8179

#Benfield Substance 8506
Mohnen Glyn Mawr Elba 1758
#Connealy Final Product
#Sitz Pride 308Y
#Coleman Charlo 0256
S A V Blackcap May 4136
#Sinclair Emulation XXP
S R Dorothy Ideal 460

CE	BW	WW	YW	Milk
1	2	64	118	20

Sells AI bred to calve 3/9/2025 to Baldrige Badger with a heifer calf.



LOT 146 • S R Dorothy Ideal 2163



S R LADY BLUE 213

BD: 3/6/2022

Reg #: 20536932

#Mohnen Substantial 272
#Sitz Stellar 726D
SITZ Pride 200B

#S A V Regard 4863
S R Lady Blue 8152
S R Lady Blue 118

#Benfield Substance 8506
Mohnen Glyn Mawr Elba 1758
#Connealy Final Product
#Sitz Pride 308Y
#S A V Resource 1441
#S A V Blackcap May 5530
#O C C Paxton 730P
#S R Lady Blue 631

CE	BW	WW	YW	Milk
7	0.1	67	114	19

Donor Granddam, Lady Blue 118, has a progeny WR 5/115 and out of a Pathfinder Great Granddam with a WR 7/106. • *Sells AI bred to calve 3/9/2025 to Baldrige Badger with a bull calf.*



S R LADY BLUE 118 • Maternal Granddam of Lot 147



S R BONNIE BELLE 2130

BD: 3/16/2022

Reg #: 20532416

#Tehama 717 Band 876
#Tehama Blackcap Revolution
#Tehama Blackcap E406

#S A V Resource 1441
S R Bonnie Belle 408
#S R Bonnie Belle 104

Tehama Band 717
#Tehama Echo B287
#Paramont Ambush 2172
Blackcap of Tehama C161
Rito 707 of Ideal 3407 7075
S A V Blackcap May 4136
#O C C Paxton 730P
#S R Bonnie Belle 980

CE	BW	WW	YW	Milk
2	3.3	72	117	23

Pathfinder Granddam and Great Granddam. Dam's WR 4/101. Exciting mating here with a Baldrige Badger heifer from a female that comes from our embryo program. 9 Pathfinders in her pedigree. • *Sells AI bred to calve 3/9/2025 to Baldrige Badger with a heifer calf.*



S R BONNIE BELLE 104 • Maternal Granddam of Lot 148



S R PRIDE 2106

BD: 3/14/2022

Reg #: 20534231

Basin Rainmaker 2704
#Basin Rainmaker 4404
Basin Joy 1036

#H A Power Alliance 1025
S R Pride 0131
Sitz Pride 2188

#Basin Rainmaker P175
#Basin Erica 7520 BV
#Basin Payweight 1075
Basin Joy 566T
#Sitz Alliance 6595
H A Rito Lady 4167
#N Bar Emulation EXT
#Sitz Pride 838

CE	BW	WW	YW	Milk
0	3.7	51	94	28

One of the few cows we have from the Sitz Pride cow family. Outcross proven pedigree. • *Sells AI bred to calve 3/9/2025 to Baldrige Badger with a heifer calf.*



LOT 150 • S R Barbaramere Nell 017



S R BARBARAMERE NELL 017

BD: 3/12/2020

Reg #: 19932061

#Benfield Substance 8506
#Mohnen Substantial 272
 Mohnen Glyn Mawr Elba 1758
 #Koupal Advance 28
S R Barbaramere Nell 821
 S R Barbaramere Nell 6140

#H A Image Maker 0415
 Benfield Edella 1105
 #LT Territory 5824 of EA
 Mohnen Glyn Mawr Elba 1345
 #Koupal Juneau 797
 Koupal Ebonette 734
 #Connealy Capitalist 028
 S R Barbaramere Nell 412

CE	BW	WW	YW	Milk
12	-1.1	69	110	28

Dam's WR 2/102. Progeny WR 2/105 with a 369-day calving interval and an excellent numbers package. Great Granddam progeny WR 5/104. • **Sells AI bred to calve 3/9/2025 to Baldrige Badger with twins, a bull calf and a heifer calf.**



LOT 151 • S R Dorothy Ideal 151



S R DOROTHY IDEAL 151

BD: 3/16/2021

Reg #: 20249775

#Tehama 717 Band 876
#Tehama Blackcap Revolution
 #Tehama Blackcap E406

#S A V Resource 1441
S R Dorothy Ideal 6112
 S R Dorothy 968

Tehama Band 717
 #Tehama Echo B287
 #Paramont Ambush 2172
 Blackcap of Tehama C161
 Rito 707 of Ideal 3407 7075
 S A V Blackcap May 4136
 #O C C Great Plains 943G
 Ideal 4637 of 452 285

CE	BW	WW	YW	Milk
0	3.7	72	122	23

Dam's WR 5/107. • **Sells AI bred to calve 3/10/2025 to Baldrige Badger with a heifer calf.**



BALDRIDGE BADGER • AI Service Sire for Lots 145-152



S R DOROTHY IDEAL 6112 • Dam of Lot 151



S R CLOVA PRIDE 185

BD: 3/18/2021

Reg #: 20249757

#Tehama 717 Band 876
#Tehama Blackcap Revolution
 #Tehama Blackcap E406

#O C C Paxton 730P
S R Clova Pride 202
 S R Clova Pride 725

Tehama Band 717
 #Tehama Echo B287
 #Paramont Ambush 2172
 Blackcap of Tehama C161
 O C C Focus 813F
 O C C Blackbird 736K
 #B C C Bushwacker 41-93
 M H Clova Pride 834

CE	BW	WW	YW	Milk
3	3.1	70	104	23

Dam's WR 10/100 with a 366-day calving interval. Granddam WR 8/101 with a 365-day calving interval. Great Granddam left the herd at the age of 17 and raised 15 calves. Her own progeny WR 1/108. • **Sells AI bred to calve 3/10/2025 to Baldrige Badger with a bull calf.**



S R CLOVA PRIDE 725 • Granddam of Lot 152



S R LADY BLUE 585 • Dam of Lot 153



LOT 153 • S R Lady Blue 9128



S R LADY BLUE 9128

BD: 3/24/2019

Reg #: 19632324

#S A V 004 Density 4336
#Bruin Torque 5261
Falcon Blackbird 6071

#S A V Resource 1441
S R Lady Blue 585
S R Lady Blue 118

#S A V 8180 Traveler 004
S A V May 7238
#Connealy Dateline
#Vermilion Blackbird 5044
Rito 707 of Ideal 3407 7075
S A V Blackcap May 4136
#O C C Paxton 730P
#S R Lady Blue 631

CE	BW	WW	YW	Milk
6	2.1	57	102	27

Progeny WR 2/110. Dam's WR 7/98. • **Sells bred to calve 3/25/2025 to SAV Estocolmo 8331 with a heifer calf.**



S R LADY BLUE 118 • Maternal Granddam of Lot 153



S R BLACKBIRD 533

BD: 3/9/2015

Reg #: 18352982

Rito 707 of Ideal 3407 7075
#S A V Resource 1441
S A V Blackcap May 4136

Sinclair Memento 8RL4
DR Blackbird 157
DR Blackbird 770

#R R Rito 707
Ideal 3407 of 1418 076
#S A V 8180 Traveler 004
#S A V May 2397
Sinclair Rito Legacy 3R9
Sinclair Lady 0353 4465
Sinclair Mt Time 4P88
DR Blackbird 9828 2122

CE	BW	WW	YW	Milk
5	1.5	54	102	20

Dam's WR 7/102 and YR 4/104 with a 366-day calving interval. • **Sells bred to calve 3/20/2025 to SAV Estocolmo 8331 with a bull calf.**



S R BEAUTY 0164

BD: 4/10/2020

Reg #: 19932299

#Tehama 717 Band 876
#Tehama Blackcap Revolution
#Tehama Blackcap E406

#N Bar Emulation EXT
#S R Beauty 3215
M H Beauty 723

Tehama Band 717
#Tehama Echo B287
#Paramont Ambush 2172
Blackcap of Tehama C161
#Emulation N Bar 5522
N Bar Primrose 2424
#D H D Traveler 6807
V D A R Beauty 50

CE	BW	WW	YW	Milk
-3	4.3	51	85	19

Pathfinder Dam's WR 7/100 with a 366-day calving interval. Larger framed Revolution daughter out of a pathfinder dam and the Beauty cow family that originated at VanDyke in Montana. Super gentle and will eat cake directly out of your hand. • **Sells bred to calve 3/24/2025 to SAV Estocolmo 8331 with a bull calf.**



M H BEAUTY 723 • Maternal Granddam of Lot 155



LOT 156 • S R Dorothy Ideal 8166



S R BETTY 243

BD: 3/8/2022

Reg #: 20534269

Basin Rainmaker 2704
#Basin Rainmaker 4404
Basin Joy 1036

#Connealy Thunder
S R Betty 578
S R Betty 3207

#Basin Rainmaker P175
#Basin Erica 7520 BV
#Basin Payweight 1075
Basin Joy 566T
#Baldridge Kaboom K243 KCF
#Parka of Conanga 241
#O C C Emblazon 854E
M H Betty 916

CE	BW	WW	YW	Milk
8	0.3	47	83	29

Sells AI bred to calve 3/9/2025 to Baldridge Badger with a heifer calf.



S R CLOVA PRIDE 725 • Granddam of Lot 158



S R BONNIE BELLE 2137

BD: 3/16/2022

Reg #: 20532417

#Tehama 717 Band 876
#Tehama Blackcap Revolution
#Tehama Blackcap E406

#S A V Resource 1441
S R Bonnie Belle 408
#S R Bonnie Belle 104

Tehama Band 717
#Tehama Echo B287
#Paramont Ambush 2172
Blackcap of Tehama C161
Rito 707 of Ideal 3407 7075
S A V Blackcap May 4136
#O C C Paxton 730P
#S R Bonnie Belle 980

CE	BW	WW	YW	Milk
2	3.3	72	117	23

Pathfinder Granddam and Great Granddam. Dam's WR 4/101. Exciting mating here with a Baldridge Badger heifer from a female that comes from our embryo program. 9 Pathfinders in her pedigree. • *Sells AI bred to calve 3/9/2025 to Baldridge Badger with a heifer calf.*



S R DOROTHY IDEAL 8166

BD: 3/31/2018

Reg #: 19335916

#Koupal Juneau 797
#Koupal Advance 28
Koupal Ebonette 734

#Connealy Thunder
S R Dorothy Ideal 699
S R Dorothy Ideal 460

#O C C Juneau 807J
Koupals Elba 187
#S A V Initiative 4406
#Koupals Ebonette 545
#Baldridge Kaboom K243 KCF
#Parka of Conanga 241
#S A V Resource 1441
Ideal 4535 of 7451 5467

CE	BW	WW	YW	Milk
9	0.8	59	100	34

Progeny WR 3/110. Great Granddam progeny WR 3/103. • *Sells bred to calve 3/26/2025 to SAV Estocolmo 8331 with a bull calf.*



S R CLOVA PRIDE 315 • Dam of Lot 158



S R CLOVA PRIDE 2145

BD: 3/18/2022

Reg #: 20532422

#Tehama 717 Band 876
#Tehama Blackcap Revolution
#Tehama Blackcap E406

#O C C Paxton 730P
#S R Clova Pride 315
S R Clova Pride 725

Tehama Band 717
#Tehama Echo B287
#Paramont Ambush 2172
Blackcap of Tehama C161
O C C Focus 813F
O C C Blackbird 736K
#B C C Bushwacker 41-93
M H Clova Pride 834

CE	BW	WW	YW	Milk
2	2.8	65	100	23

Pathfinder Dam's WR 8/105. Granddam WR 8/101. Great Granddam left the herd at the age of 17 and raised 15 calves. • *Sells AI bred to calve 3/10/2025 to Baldridge Badger with a bull calf.*



ROSETTA 0147 OF BEST ANGUS

BD: 4/9/2020

Reg #: 19928775

Angus Alliance Winchester975
Best Winchester 8024
#Lassie 104 of Circle V

#Sitz Rainmaker 11127
#Rosetta 735 of Best Angus
Rosetta 808 of Best Angus

#N Bar Emulation EXT
Coleman Donna 386
S R Alliance 904
Lassie 6199 of Mc Cumber
Sitz Rainmaker 8075
Sitz Emma E 417L
#S A V 8180 Traveler 004
#Rosetta 107 of Best Angus

CE	BW	WW	YW	Milk
3	2.1	58	100	29

Pathfinder Dam had a progeny WR 5/107. Her own progeny WR 2/109. • *Sells bred to calve 3/31/2025 to Silverado with a bull calf.*



We are excited to offer 6 bred heifers out of our replacement pen. This is the first time we have sold bred heifers to the public. These are some of the top performing heifers and all AI's for mid-March delivery. They represent our commitment to raising problem-free females that work with nature and stem from our solid Rosetta, Marie and Everelda Entense cow families.



Rosetta COW FAMILY

In 1986, Rosetta 622 of McCumber was purchased as the original heifer that gave Best Angus their start. Best Angus purchased another Rosetta, Shoshone Viking grand daughter in 1994 who was a 13 year old Pathfinder. All of the Rosettas in our herd stem back to those two great cows. The Rosettas have been very fertile. They have beautiful heads, long bodies and nearly perfect udder structure. They are also very intelligent.



LOT 161 • Best Rosetta 317



BEST ROSETTA 317

BD:03/19/23

Reg #: 20854860

Rito 707 of Ideal 3407 7075

#S A V Resource 1441

S A V Blackcap May 4136

#Sinclair Fortunate Son

#Rosetta 876 of Best Angus

#Rosetta 244 of Best Angus

#R R Rito 707

Ideal 3407 of 1418 076

#S A V 8180 Traveler 004

#S A V May 2397

Sinclair Emulate 7XT28

#Sinclair Blackbird 2P8 7079

#Sinclair Extra 4X13

Rosetta 068 of Best Angus

CE	BW	WW	YW	Milk
-2	3.9	63	118	23

Here is a nice Resource daughter out of a second-generation pathfinder Rosetta cow. The Rosetta family comes from the original cow I purchased from McCumber in 1986. More than 50% of our herd stems back to this original purchase. She is confirmed AI bred.



LOT 163 • Best Rosetta 365



BEST ROSETTA 3102

BD:03/31/23

Reg #: 21067664

#Connealy Packer 547

21AR Packer 4313

21AR Estrada 9032

Angus Alliance Winchester975

Rosetta 9100 of Best Angus

Rosetta 375 of Best Angus

#Felttons Meat Packer 62

Bestrelle of Conanga 539

#O C C Great Plains 943G

#21AR Estrada 7196

#N Bar Emulation EXT

Coleman Donna 386

#O C C Missing Link 830M

Rosetta 831 of Best Angus

CE	BW	WW	YW	Milk
6	1.6	62	106	18

Real broody 21AR Packer daughter.



BEST ROSETTA 365

BD:03/28/23

Reg #: 20896341

O C C Zodiac 655Z

Mc Cumber La Joya 098

#Lassie 113 of Mc Cumber

Best Winchester 992

Rosetta 181 of Best Angus

Rosetta 2010 of Best Angus

O C C Umax 820U

O C C Dixie Erica 628W

#O C C Missing Link 830M

#Lassie 935 OF Mc Cumber

Angus Alliance Winchester975

#Rosetta 294 of Best Angus

#Leachman Right Time

#Rosetta 149 of Best Angus

CE	BW	WW	YW	Milk
10	-1.3	42	75	23

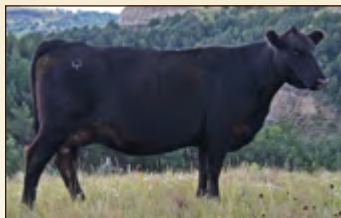
This heifer is the easy fleshing, moderate framed, efficient kind. Her pedigree is full of maternal legends of the Angus breed.



LOT 162 • Best Rosetta 3102

Marie COW FAMILY

We purchased our first Marie from Connelly Angus Ranch in Valier, MT, in December of 2005. We had followed the CAR program for many years and finally got the opportunity to buy into their dominant cow family. Fertility and udder quality have been excellent with this line of cows. They don't have the length of the Rosettas, but they tend to be a little wider made and easier fleshing. They have "fit" in our environment as well as any cattle we have owned.



LOT 164 • Best Marie 311



BEST MARIE 311

BD:03/17/23

Reg #: 20854859

#Connealy Packer 547
21AR Packer 4313
21AR Estrada 9032

#Sinclair Fortunate Son
Marie 739 of Best Angus
#Marie 8003 of Best Angus

#Feltons Meat Packer 62
Bestrelle of Conanga 539
#O C C Great Plains 943G
#21AR Estrada 7196
Sinclair Emulate 7XT28
#Sinclair Blackbird 2P8 7079
#CAR Duke 104
C A R Miss Viking 604

CE	BW	WW	YW	Milk
4	2	65	111	21

Here is a high ratioing 21 AR Packer 4313 daughter. We love the Marie cow family. They have demonstrated excellent fertility and perfect udders. She is confirmed AI bred 6/10/2024 to Best Box Cross.



LOT 165 • Best Marie 3133



BEST MARIE 3133

BD:04/07/2023

Reg #: 21072948

#Connealy Packer 547
21AR Packer 4313
21AR Estrada 9032

#SAV RSource 1441
Marie 0106 of Best Angus
Marie 8001 of Best Angus

#Feltons Meat Packer 62
Bestrelle of Conanga 539
#O C C Great Plains 943G
#21AR Estrada 7196
Rito 707 of Ideal 3407 7075
S A V Blackcap May 4136
#S A V 8180 Traveler 004
C A R Miss Viking 604

CE	BW	WW	YW	Milk
0	3.8	68	120	18



BEST EVERELDA ENTENSE 343

BD:03/26/23

Reg #: 20860543

#Basin Payweight 006S
#Basin Payweight 1682
21AR O Lass 7017

#GDAR Game Day 449
Best Everelda Entense 1018
Sitz Everelda Entense 3738

#Vermilion Payweight J847
Basin Lucy 3829
#HARB Pendleton 765 J H
21AR O Lass F24A
#Boyd New Day 8005
#G D A R Miss Wix 474
Leachman Prime Time
Sitz Everelda Entense 3133

CE	BW	WW	YW	Milk
10	-0.7	64	107	28

This heifer has a chance to be special. She is a Basin Payweight daughter out of the famed Everelda Entense family. She started life at only 58 pound at birth, but she excelled weighing in with a 116 weaning ratio. She is confirmed AI bred 6/10/2024.



Thank You
FOR YOUR CONTINUED SUPPORT!



SEMEN *available!*

Contact **STROMMEN RANCH**

BRUIN Torque 5261

AAA #: 18248293 • There are three things Torque does better than any bull we have ever used – he adds body length, improves disposition and he stands on a tremendous foot. He works great on those big-bodied, easy-fleshing females that need spine length and extension up front. He improves disposition and foot quality, all while maintaining maternal function and power. His sons consistently sell at the top of our sales and we truly believe the best is yet to come with the 60+ Torque daughters we've retained in our herd.



SAV EASY Street 2289

AAA #: 20473600 • We acquired SAV Easy Street 2289 with our friends at Select Sires Argentina & Juan Debernardi-Carne. We thought he was the true highlight calving ease bull of the 2023 Schaff Angus Valley sale.

Easy Street's beautifully uddered President dam has a birth ratio of 2@87. His maternal granddam has a birth ratio of 10@93 and his great granddam has a birth ratio of 10@95. His second and third dams both produced beyond 12 years of age, proving not only their fertility, but their longevity, as well. This makes us very confident in Easy Street's potential to be a long-term calving-ease bull that will leave behind beautiful, productive, long-lasting females.

We expect this gentle-disposition bull to make beautiful females in a calving-ease package.



For semen on these bulls or to book custom AI services, contact us!

Aaron & Sheyna Strommen • Solen, N.D. • (701) 290-7983 • [Facebook](#) [Twitter](#) [Instagram](#)

www.**StrommenRanch**.com

BEST *Angus*

CALVING-EASE BULLS

FOR YOUR NEXT HEIFER PROJECT!



Angus Alliance Winchester 975 • Reg# 16533253

After using Winchester for a season and being thoroughly impressed, we purchased a semen interest in Winchester. We have used him mainly for breeding heifers for the past five years. The calves come easy with excellent vigor. He has a classic pedigree combining maybe the greatest female producer in the history of the Angus breed in N Bar Emulation EXT and Coleman Donna 386, the matriarch of the Coleman program. The daughters are what you would expect. They are attractive wedge-shaped females with strong udder attachments and perfect teat size. His EPD profile has held strong even though he has more of a historic pedigree. His actual performance ratios from use in 7 herds show 102 ratio for yearling and weaning along with 106 for marbling. His progeny demonstrate extra length and excellent rib and capacity. Dispositions have been very good. We have only had one cow that needed to be culled due to temperament after calving. If you are looking for sure thing calving ease and exceptional daughters with a classic pedigree, you might want to give him a try.



Coleman Donna 386 is the dam of Winchester



Best Box Cross 291 • Reg# 17438354

We have never used a bull that has had a more positive impact on our herd than Box Cross's sire LAR Alliance 64L. We have used numerous sons over the years and many of our top cows have been 64L daughters. Box Cross's dam was a Pathfinder donor dam that weaned off 9 calves for us with a 105 weaning ratio. She was my favorite cow at the ranch. We sold Box Cross to Ash Coulee Ranch as a yearling. Scott used him on heifers and cows with great success. Many of his sons were sale toppers and Scott says he still has customers asking if they could get more Box Cross sons. We didn't start using Box Cross until we started to see daughters producing for Ash Coulee. Box Cross calves are small at birth, but they still have excellent calf vigor and they catch up to their higher birth contemporaries by weaning. Box Cross will reduce frame without a big decrease in performance. The daughters are fertile and productive. Box Cross daughters are the smallest cows in our herd, with excellent udder structure with strong attachments and small teats. They are fertile and easy cattle to be around.

N Bar Emulation EXT is the sire of Winchester



For semen on these bulls, contact
Pete & Vawnita Best • Watford City ND
701-570-6959 • bestangus@yahoo.com

ST

TALKINGTON ANGUS RANCH



CALVING★EASE BULLS

FOR YOUR NEXT HEIFER PROJECT!

Wolverine

SAT Wolverine 916 • Reg #: 19544206 • The Wolverine progeny are moderate, stout, good footed, loaded with breed character, and have plenty of substance for a bull with his level of calving ease. His high volume, easy fleshing Pathfinder dam records a BW ratio of 5/98 and a WW ratio of 5/105. Wolverine has become a go to for breeding virgin heifers nationwide as he has ascended to near the top of Select Sires sales the past two years.

Contact Select Sires or Talkington Angus Ranch for semen.



Klondike

Montana Klondike • Reg #: 20412812 • Klondike was our selection at the 2023 Montana Ranch sale. He is stout made with an impressive hip, excellent hoof structure, and a real herd sire look in a moderate package. He will be an important part of our heifer breeding going forward in our herd and in custom AI projects. His sire, Logo 8148, is an outcross source of low birthweight and high growth genetics. His dam, Coleman Donna 505, is powerfully built, yet feminine with a picture-perfect udder.

Contact Talkington Angus Ranch or Montana Ranch for semen.



E&B Essential

E&B Essential • Reg #: 20128935 • Essential possesses incredible structure and design and we appreciate his foot quality and mobility. He is a balanced trait sire fortified by a proven cow family that we expect to add fleshing ability, improve docility, and longevity. His standout dam is admired for her femininity, structural integrity, udder quality, and exceptional feet and legs. She is also the dam of the Accelerated Genetics sire E&B New Addition, who has been a perennial sales leader and has left beautiful, moderate framed daughters with exceptional udder quality who wean big calves across the US and South America. We feel Essential has the potential to be one of the top maternal sons of the extremely popular Growth Fund.

Contact ST Genetics or Talkington Angus Ranch for semen.

For a semen, please call or email 701-575-4159 • 701-290-7222
Shane and Amanda Talkington • Belfield, ND



BADLANDS ANGUS ALLIANCE

1550 70th Street Box 7
Solen, ND 58570

**TIME SENSITIVE MATERIAL
PLEASE DELIVER IMMEDIATELY**



PETE, VAWNITA & KYLE BEST



**SHANE & AMANDA, ABBY, HADLEY &
CADE TALKINGTON**



**AARON & SHEYNA, CASSIDY, COOPER &
CLINT STROMMEN**

BADLANDS ANGUS ALLIANCE BULL & BRED FEMALE SALE

December 4, 2024 • Stockmen's West • Dickinson, ND • 12 p.m. MST
65 COMING 2-YEAR-OLD ANGUS BULLS • 100+ REGISTERED ANGUS BRED FEMALES
650 COMMERCIAL BRED HEIFERS FROM OUR CUSTOMERS

The Talkington, Best and Strommen herds are each backed by a similar maternally-oriented, balanced-trait breeding philosophy. We each place heavy emphasis on fertile, efficient, easy fleshing cows, which is why our genetics fit well together for discriminating cattlemen who desire cattle backed by generations of maternal excellence – phenotypically appealing females with good feet, great udders and outstanding docility.

We invite you to join us in Dickinson on Dec. 4, 2024, for the Badlands Angus Alliance Bull & Bred Female Sale featuring elite, source- and genetic-verified bred females from our customers and stout, rugged, coming 2-year-old bulls from our respective programs.

